

A VERY WARM WELCOME TO OUR LATEST A - Z BUYERS' GUIDE

We've designed our latest guide with you in mind. We're showcasing more print, promotion, communication, exhibition products and services than ever before, so it's easier to find exactly what you're looking for.

If you're responsible for staying ahead of the competition, promoting a cause or getting an important message across, we can help you find the right solution. Everything from translating your ideas into workable specifications, original design and creative artwork, state of the art wide format printing, 24 hour manufacturing and fabrication, right through to successful UK wide transport, installations and storage.

We've got exciting new products to show you too. Things like custom printed textiles and fabrics including carpets and furnishings - all of which are backed with know-how, reliability and easy ordering that save you valuable time and trouble.

We regularly ask for your feedback to improve our service - we'd love to hear from you via our Facebook or Twitter threads. We value your comments, good or otherwise. Whilst the products and technologies within our marketplace will continue to change, some things will stay the same. In everything we do, we aspire to be honest, reliable and in tune with your needs.

To find out more about how we can help to keep you in front of the competition, please don't hesitate to get in touch - you can call us on 0800 389 9898.

We value our customers, we're here to help...



GREAT REASONS TO CHOOSE US

Rapid Quotations

Your experience of Image Group is our priority. That's why we operate market leading integrated customer service software that guarantees you rapid quote response and assured order progress through our factory.

Easy Ordering

Keeping things simple and jargon free means ordering from The Image Group is very easy. Whether you are placing your order or have a technical query, we're always happy to help.

Call us today and put us to the test on 0800 389 9898.

We Manufacture

Our continued investment in the most advanced digital technologies means we produce display solutions that suit all applications. What's more, with Image Group, you're buying from the manufacturer at the most competitive prices.

Help With Artwork

We can of course accept artwork in a wide range of formats and will guide you through the process step by step. We have a new online portal for you to upload your artwork.

However, we can also create your artwork from your original ideas and sketches and supply an email proof for your approval.

Call us today on 0800 389 9898 from 8.30am to 6.00pm Mon - Fri

Visit us for more info or enquire at www.imagegroupuk.com

Earl Road, Stanley Green Trading Estate, Cheadle. SK8 6QE.

Design & Creative

3d Services, Drone Filming, Original Creative for Digital & Websites and Logo & Branding.

Page 6-7

Digital Print & Finish

Wide Format Print, Digital Cutting & Routing and Finishing Services.

Page 8-9

Joinery & Fabrication

Bespoke Joinery, Fabrication, Electrical, Painting and Exhibition Build Services.

Page 10-11

Surveys & Installation

Full Site Surveys, Method & Risk, Planning & Consents, Project Management & Installation.

Page 12-13

Material Guide

A guide to some of the different substrates and finishes available.

Page 114-115

Artwork Guide

A guide for submitting your designs for print and some tips on setting up your artwork.

Page 116

A-Z GUIDE TO PRODUCTS & SERVICES

Acrylic	14-15	Lecterns	68
Airframe Display System	16-17	Lightboxes	69
Barrier & Heras Fence System	18	Light Solutions	70
Billboards	19	Linoleum	71
Building Wraps	20-21	Literature Dispensers	72
Built Up Letters & Signage	22-23	Magnetic Graphics	73
Canvas Framed Prints	24-25	Mesh PVC Banners	74-75
Cardboard Engineering	26	Museum & Galleries	76-77
Carpet Tiles & Carpet	27	Office Graphics & Interiors	78-79
Construction Site Hoarding	28-29	Outdoor Banner Stands	80
Curtain Fabrics & Cushions	30	Outdoor Event Branding	81
Custom Printed Chair Covers	31	Pan Signs	82-83
Custom Printed Doormats	32	Panel & Pole Signs	84
Cut Out Figures	33	Pavement Signs	85
Digital Signage	34	Pop-Up Displays	86-87
Entrance Displays	35	Pop-Up Event Bars	88
Etched & Frosted Vinyl	36	Portable Conference Kits	89
Exhibition Banners	37	Portable Exhibitions Walls	90
Exhibition Graphics	38-39	Product Dump Bins	91
Exhibition Stand - Bespoke	40-41	PVC Banners	92-93
Exhibition Stand - Modular	42-43	Re-board	94
Exhibitions - Permanent	44-45	Reception Desks	95
External Monolith Signs	46	Roller Banners	96-97
External Site Boards	47	Roller Blinds	98-99
Fabric Graphics	48-49	Shell Scheme Graphics	100
Flags	50-51	Shop Fronts & Fascias	101
Flexface Signs	52-53	Showroom Displays	102
Foldaway Kits	54-55	Tablecloths	103
Gazebos	56-57	Temporary Advertising	104-105
Graphic Panels	58-59	Totem Columns	106
Hanging Graphics	60	Trailer Wraps	107
Horizontal Pop-Up Displays	61	Twist Graphic Wall System	108
In-Store Promotional Stands	62	Vehicle Graphics	109
Interior Signs & Office Signs	63	Vinyl Letters & Shapes	110-111
Interior Wall Vinyl	64-65	Wallpaper	112
Lamppost Banners	66	Window Graphics	113
Large Format Posters	67		

Logo & Brand Creative

Complete brand creation from logo through to guidelines, stationary and beyond.

ORIGINAL DESIGN & CREATIVE SERVICES

Design & creative services in a colour that suits you. From technical knowledge, access to image libraries and a little creative flair. When it comes to artwork and design our service is tailored to suit your needs whatever they may be.

3D Models & Renders

Photo real renders of products, exhibition stands and architectural developments.

Drone Aerial Filming

4K video footage or photography from our fully CAA certified drone service.

We have a tradition of saying 'yes' to the most demanding client briefs so don't be afraid to get in touch with us to discuss your ideas on 0800 389 9898.

From absolute beginners to design wizards, our studio solutions are available to everyone. Help and advice on photo resolution, print quality, colour balancing and file checking, through to our design and creative services... we've got it covered.

We are always happy to hear your ideas and discuss your projects no matter how off the wall they may seem at the time. Feel free to get in touch and we'll try our best to help.

Starting from scratch?

As a client, you'll possibly want us to take a loose brief either verbally or roughly sketched and to turn a basic idea into a design you'll love. This simple process gives you confidence that you're making the most of your display opportunities.

Artwork supplied by you?

If you're an agency or a creative department and speak the language of file formats, colours and resolution, you'll find working with us a hassle free experience. Our pre-press service offers accurate file checking.

If we do spot a problem... you'll be the first to know. We'll call you, agree the best solution and get your job back on schedule without delay.

Working with your agency?

Passing the baton safely between project stages is crucial to delivering the success you expect. We'll work seamlessly alongside your creative team, responsive to their demands and supporting all the hard work that's gone before.

Website & Digital

Complete digital design concepts for websites, mail campaigns, social media & more.



We are well established in an impressive 40,000 sq ft of manufacturing space in Manchester. Our continued investment in state of the art printing and finishing equipment has enabled us to create a high quality work environment that underpins our everyday commitment to exceptional customer service.

What's more, because we print and finish the vast majority of our product range in-house, you can be sure you're buying at the best possible prices, direct from the supplier on the shortest possible lead times. If it's possible, we'll usually make it happen on your behalf at a price that's hard to beat.

We've invested in marketing too by bringing our own web development in house. This is where we hope to clearly illustrate our product offering, expertise and a can-do attitude to meeting your needs via our website, case studies, news releases, exhibition showroom and our market leading 'Definitive Buyers' Guide.

Before and after the printing and finishing process we have even more ways support you including creative services, project planning, site surveys and nationwide installation to take the strain out of even the most demanding project.

We take pride in a 'can do' approach and our priority is to meet your specific needs on time and hassle-free. In other words 'adding value for money' every time you need us.

STATE OF THE ART DIGITAL PRINT & FINISHING



State of the art
wide format UV
and Latex printers



Print direct to
a huge range
of rigid boards



Digital cutters for
precision finishing
and routing

WIDE FORMAT DIGITAL PRINT & FINISHING

We've continued to invest to ensure that we remain at the forefront of the large format printing and finishing market and maintain the widest choice of quality products and services available today.



If you'd like to find out more about how we can help, get in touch with one of our team today on 0800 389 9898.

HIGH QUALITY JOINERY, FABRICATION & ELECTRICAL SERVICES

Using a single contractor with a dedicated project manager for all your joinery, fabrication and electrical requirements brings tremendous advantages to your exhibition, signage or display project.

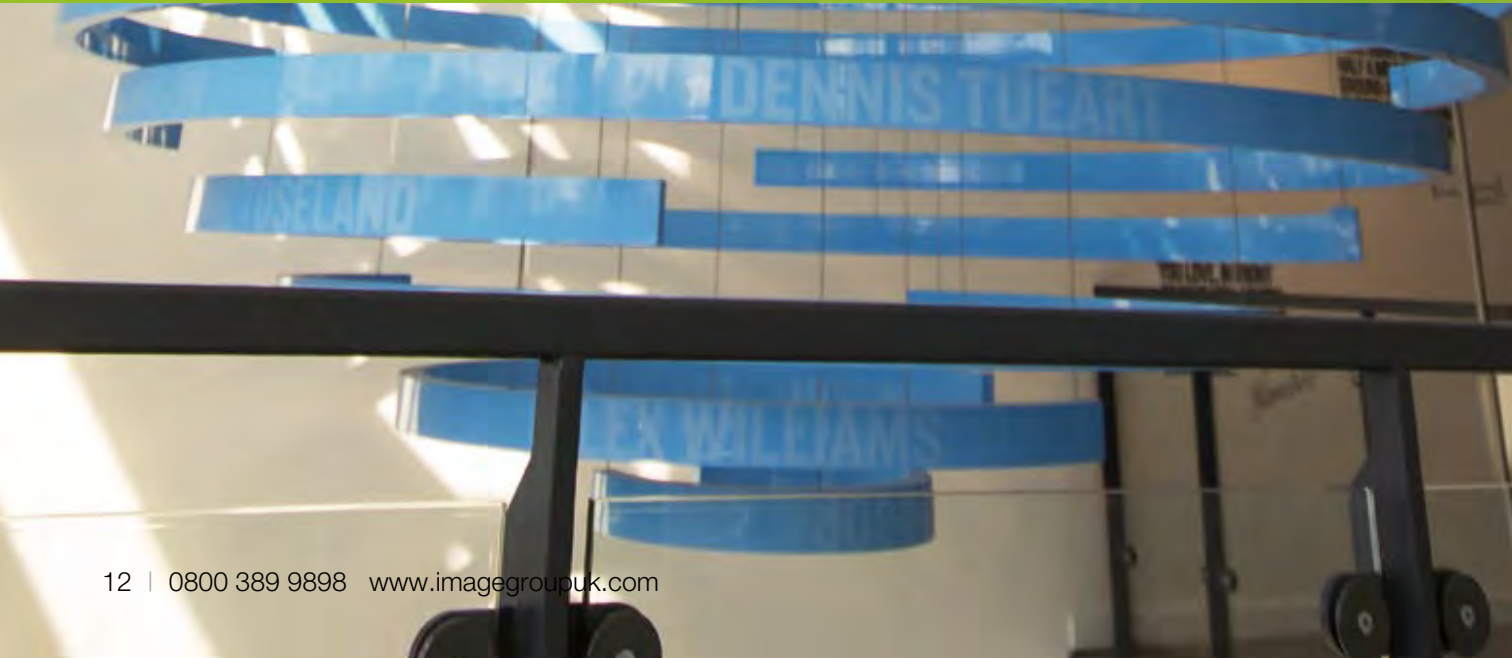
It means liaison with one project manager and a co-ordinated approach towards finishing the project on time and on budget. It also means that the responsibility for important issues such as Method Statements, Risk Assessments and Health & Safety are clearly defined from the start.

Our approach to joinery and electrical services is very simple - safety first... followed by good planning, ownership and a commitment to getting things done properly.

Speak to our specialist contractor team for a wide range of high quality joinery and electrical services. We have a full in-house joinery / electrical department with state of the art facilities including large format saws and digital routing.

We have a team of experienced professionals housed in our 40,000sq.ft of manufacturing space at our base in Manchester.

We enjoy providing great service and we're enthusiastic and committed to securing happy, loyal customers, who in turn feel able to recommend us to their colleagues and contacts. What's more, we're flexible and we care about your experience with The Image Group and we have decades of experience in delivering ambitious projects UK wide.



Just some of our fabrication services



Expert joiners with decades of experience



Engineering and steel fabrication



Lighting and electrical professionals



Paint and coating specialists

Call us today on 0800 389 9898 for instant quotes and advice from the specialists.



Here at the Image Group we have a dedicated installation department boasting three full time teams that cover the UK on a weekly basis. With decades of experience we can deliver your exhibition, promotion, campaign or display installation requirements without any hassle.

Our service includes:

- UK wide survey service complete with working drawings where appropriate
- Liaison with site or store managers and site personnel or your client
- Provision of all necessary risk assessments and method statements
- Supply, delivery and disposal of all necessary access equipment

- Assistance with planning permissions and consents as well as traffic management planning
- Facilities management, accommodation and out of hours working

Our installation teams are good listeners and creative problem solvers too. Keeping things simple, having a common sense approach and demonstrating strong values on things like flexibility, energy and customer focus all underpin our methods of working.

We have a huge amount of experience across the UK gained over the last 19 years. Visit our website at www.imagegroupuk.com to see just a few examples of work.

UK wide surveys & installations

By using our own experienced installation teams, our own transport and our own plant, we maintain the highest standards of safety, courtesy and customer care whatever your project might be.

From survey to installation



UK wide survey and site assessment



Method & risk and planning consents



Supply and delivery of access equipment



Dedicated install teams with out of hours working



ACRYLIC, GLASS & POLYCARBONATE DISPLAYS

Beautifully rich photo realistic images that are both scratch and shatter resistant make for stunning high quality, durable displays that are guaranteed to make a big impression.

Sub-surface printing to clear materials including acrylic, glass and super tough polycarbonate gives an attractive high gloss finish that enriches the graphic images or text beneath.

A huge array of fixing methods, including hidden split batons, satin chrome stand-off fixings and aluminium rod systems enable us to install your display in most locations and create individual, bespoke solutions.

Acrylic, glass and polycarbonate panels can be back-lit for extra visual impact using LED and tube lighting.

We also offer a full design, production and nationwide installation service using our own experienced fitting teams including site liaison, method statements, risk assessments, transport and access where required.

Call us today on 0800 389 9898 for instant quotes and advice from the specialists.



Despatched within 48 hours of order



Buy direct from us for lower prices



Order your FREE sample online or over the phone



Did You Know?

Our large format printers can apply different amounts of white ink to our acrylic panels. This means we can vary the level of opacity on the finished print to give you an added dimension to your designs.





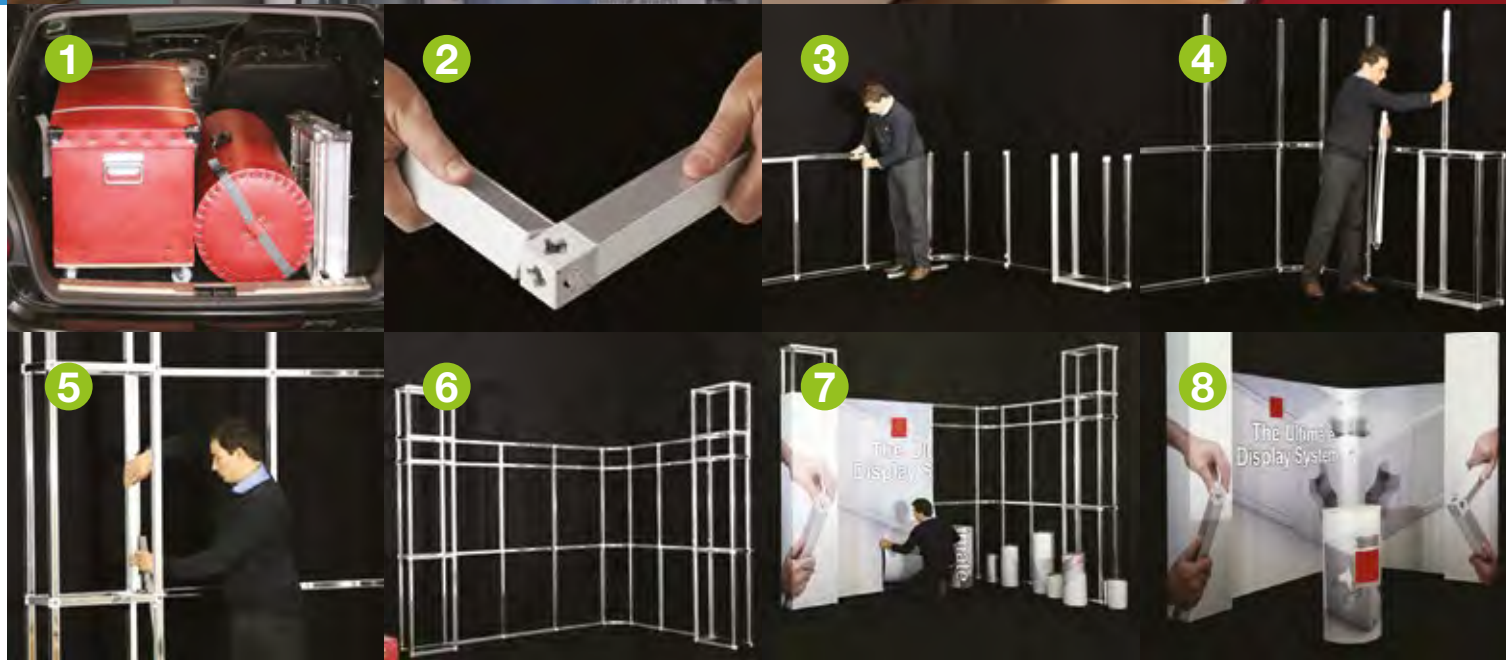
Applying Graphics

Magnetic tape on our 480micron full colour graphics work in much the same way as a pop-up kit. Long, flat or curved walls of graphics can be easily installed in minutes and Velcro can be used instead of the magnetic tape for applying rigid panels.



8 Easy Steps

This 3m x 2m corner stand can be transported in a standard sized car, unpacked and assembled in as little as 30 minutes by one person and with no tools necessary.



AIRFRAME DISPLAY SYSTEM

The Airframe Graphic Display System is a simple, cost effective product that is ideal for creating walls and structures for exhibitions and display purposes. What's more - we offer Airframe on a purchase or hire basis.

Of all the innovations in the exhibition and display industries over the last 20 years, large format graphics have had the greatest impact. The Airframe Graphic Display System is designed specifically to fulfil the need for a lightweight framing system capable of carrying many kinds of panels and graphics.

The key components of the system are a tube and a connector that join together with a brilliantly simple patented, twist-lock action. No tools are required and because the system is so easy and quick to construct, there is no need for expensive skilled labour.

In short, Airframe is an ideal solution for building strong temporary structures within exhibition and retail environments. Best of all... you can re-use your Airframe kit time and time again.

If you need to plan out how your stand will look, we also provide a 3D service to help you visualise your airframe system in your chosen space.

Call us today on 0800 389 9898 for instant quotes and advice from the specialists.



No tools required for assembly



Buy direct from us for lower prices



3D visuals available for this product

BARRIER & HERAS FENCE BANNERS

Our stunning full colour crowd barrier banners lift any sporting event or race day to premier status in a matter of hours.

Maximising visual impact and offering a unique opportunity for paid sponsorship on your special day, crowd barrier and heras fence graphics are easy to transport and even easier to install. The use of heras fence banner branding (also known as perimeter, event, or scrim banners), is an effective way of cordoning off your construction sites, events or private / VIP areas.

We print onto our Mesh PVC, Fabric or PVC substrates and we can provide a number of different shapes and sizes to suit your barrier system. Graphics can be produced as single sided banners with eyelets or as a double sided “jacket” to fit snugly over your barriers to give them a more bespoke and permanent solution.

If you wish to have more flexibility on the day we can also produce up to 100m of continuous graphics, or scrim, for you to roll out and apply on site.

Alternatively, we offer a nationwide installation service using our own qualified teams to take the hassle of install and removal away.



Call us today on 0800 389 9898
for instant quotes and advice
from the specialists.



Despatched
within 48 hours
of order



Buy direct
from us for
lower prices



Order your FREE
sample online or
over the phone



BILLBOARDS

We survey, design, supply and build all sizes of external billboards UK wide including survey, site liaison and provision of all access equipment.

If you need a reliable supplier who can take care of all your requirements for billboards, look no further. We've been designing, printing and installing billboards and site boards across the UK for well over a decade.

We offer a wide range of solutions from temporary displays to long term multi-use sites and our services cover:

- Design and creative services where required or we can liaise directly with your own design agency
- Full site surveys across the UK
- Wide choice of materials all held in stock including Dibond, Foamex, Fluted Plastics, Plywood and Acrylic
- Fully qualified in-house installation teams ensure we maintain the highest standards of health and safety and compliance
- Supply and build of timber structures or aluminium panel and pole
- Full liaison with Site Managers and Main Contractors to ensure hassle free installations

If you'd like to find out more about how we can help, get in touch with one of our team today on 0800 389 9898..



UK wide
survey & site
assessment



Method &
risk and
consents



Dedicated
in-house
installation team



BUILDING WRAPS

Building Wraps or Mesh Wraps as they are known - we offer the full service from survey, production through to installation - all from a professional and experienced company you can trust with decades worth of experience across the UK.

Small perforations in Mesh Banners allow 'airflow' through the banner installation, which reduces the load placed on the structure or building and on the banner itself. This makes Mesh PVC an ideal choice for giant outdoor banners, building wraps and event branding.

We can install your Building Wrap or Giant Mesh PVC Banner using a range of different options including - direct to facade, direct to scaffolding, temporary frame system or permanent frame system.

Super-sizing your artwork for giant banner production can pose a number of challenges; and we're on hand to assist.

From creative services to our own in house pre-press team we can provide you with striking visual ideas or work with your own creative team to coordinate your banner printing.

Our ultra-strong and flame retardant mesh banners are printed using solvent UV inks for photo-realistic quality and long-lasting outdoor colour performance. Meticulous attention to banner finishing ensures that seams, back straps (dragon tails) and eyelets are reinforced to the highest standards.



UK wide
survey & site
assessment



Method &
risk and
consents



Dedicated
in-house
installation team



Did You Know?

We can create a trompe l'oeil using photo and 3D reproduction of the existing building to make the resulting work blend in with it's surroundings.



BUILT UP LETTERS & SIGNAGE

Built up letters and signage are a well established solution for permanent sign displays that require durability and a very high quality of finish.

Often made from acrylic, polished stainless steel, aluminium or timber, built up letters can add prestige to your retail or commercial premises and are guaranteed to last for many years to come. Using our state of the art LED technology which comes with a five year guarantee you can choose from either internal, edge lit, halo illuminated or non illuminated options.

With our help and experience you can call on us to specify and supply the correct solution for your built up sign requirements. We have supplied and installed some of the most challenging signs in a huge range of locations across the UK over the years.

If you're at the planning stage of a built up sign scheme it's worth talking to a specialist with a proven track record. Our experience and advice is free and may help you choose the right sign for your specific application.

We can assist you with:

- Nationwide surveys
- Original creative and design services
- Headline prices within 20 minutes of your enquiry
- In house manufacture of all built up signs
- In house electrical fitting and commissioning
- Full installation service across the UK
- Help with planning submissions, traffic management and road closures where required



Call us today on 0800 389 9898 for instant quotes and advice from the specialists.


UK wide
survey & site
assessment


Method &
risk and
consents


Dedicated
in-house
installation team





Did You Know?

We also provide sound absorbing backings to help soften the acoustics of your room and reduce noise.

CANVAS FRAMED PRINTS

Top quality framed canvas prints mounted on high grade timber frames and despatched in only 48 hours from our factory in Manchester.

Canvas printing is now established as a unique way to stamp your individuality on any interior design project. From the boardroom to your public spaces, canvas art can be used to reinforce your brand, create ambiance or inject colour, fun or memories into your everyday surroundings.

Use your own digital images or explore our massive royalty free image library. We have access to an unbelievable ten million images, all available online and at a resolution that suits your specific application. Choose Standard 'A' sizes, your own custom size or large format sizes up to 2m high by any width up to 25m.

We've been printing canvas mounted prints for over a decade, so we work hard to make sure our service stands out. Whether it is a one-off for you home, a gift or a large scale art project, we are here to help.

Call us today on 0800 389 9898 for instant quotes and advice from the specialists.



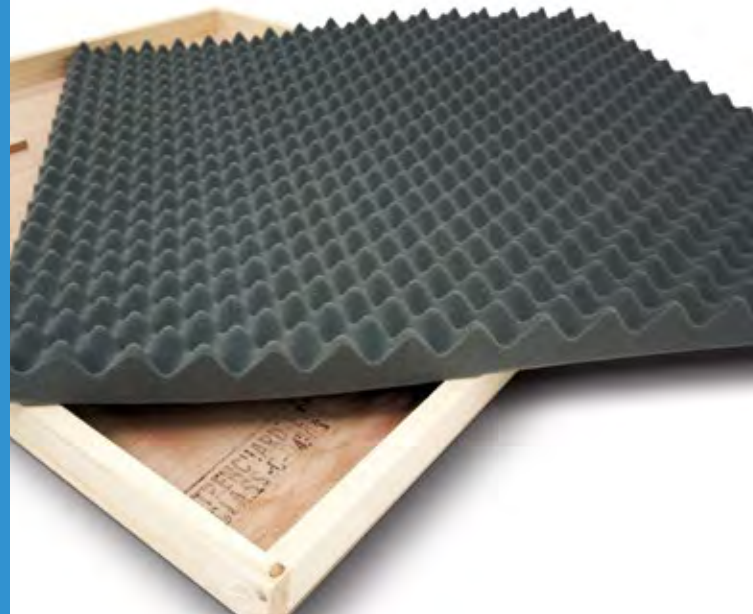
Despatched within 48 hours of order



Buy direct from us for lower prices



Order your FREE sample online or over the phone





CARDBOARD ENGINEERING

If you need low cost solutions for high quality, easy to use point of sale stands call us today.

We design, print and manufacture a wide range of cardboard and box board display units that are easy to transport and even easier to install. We even make folding cartons, point of sale stands, cardboard pop-ups, presentation packaging and point of purchase devices.

We offer a full design service including 3D rendering to illustrate your design brief. We print all our units in house, full colour at 1400dpi photo quality direct to all kinds of display board substrates.

Our full Cardboard Engineered service:

- Full in house design service with 3D visuals
- In house creasing and cutting using state of the art digital finishing equipment
- Flat packed for easy transportation and despatch
- Easy to follow assembly instructions included
- Quotations usually available within 15 minutes of your original enquiry

Did You Know?

Using our specialist Re-board material we can create furniture and desks for use in exhibitions, retail or commercial spaces.



CARPET TILES AND CARPET

Our carpets are ideal for short to medium term internal displays such as exhibition areas, meeting areas and thoroughfares where your visitors are guaranteed to be impressed.

We print reversed images onto specialist dye sublimation paper which is then passed through our dye sublimation process onto an exhibition grade polyester based carpet. We recommend patterns or full colour images work better than solid blocks of colour. Generally speaking patterns or full colour images are more forgiving for temporary fitting and installs and less prone to marking and grinning which is common on areas of high footfall.

No minimum order quantity – we can create one off tiles or large runs to completely cover your floor with our stunning quality printed carpets. We can also die cut carpet tiles to non standard sizes and shapes.

Call us for free advice, instant quotations and product samples on 0800 389 9898.



Usually despatched within 5 days



Buy direct from us for lower prices



Order your FREE sample online or over the phone

CONSTRUCTION SITE HOARDING

The Image Group are a specialist supplier of External Printed Construction Site Hoardings, Printed Hoarding Panels and Site Boards.

These beautiful printed panels can be designed to fit a perimeter of a construction site perfectly so as to hide an unsightly construction in progress. They can also serve to advertise businesses and to showcase the final look of the development.

We've been designing, printing and installing Building and Construction Site Hoardings for over fourteen years across the UK. We can manage your hoarding panels project from start to finish as well as being able to provide External Site Boards, Outdoor Planters and Flying Banners and Flags to further enhance your site.

We offer a wide range of materials that are suitable for differing applications. All our Advertising Hoardings are printed in rich, vibrant colour at 1400 dpi photographic quality. We only use warranted materials such as dibond along with external grade inks that are waterproof and guaranteed not to fade.

All our material is held in stock which means External Construction Site Hoardings projects can usually be organised in a matter of days from survey or receipt of your site plan.

We print all our Construction Hoarding panels in house and only use our own UK wide installation teams.

We work alongside main contractors organising access equipment, method statements and risk assessments. We can also help with other aspects of your project including government guidelines and safety issues such as road closures and compliance. We offer a full survey service on all Printed Hoarding Panel projects. As part of our survey service we also provide scaled working drawings.

Call us today on 0800 389 9898 for instant quotes and advice from the specialists.



Why choose Image?



External grade
fade resistant
UV stable prints



Print direct to
a huge range
of rigid boards



Arranging
road closures
for busy sites



UK wide
survey & site
assessment



Method &
risk and
consents



Dedicated
in-house
installation team



CUSTOM PRINTED CHAIR COVERS

Chair and settee covers, throws, beanbags and custom furnishings are a great way to freshen up your workplace or home environment with distinctive, full colour printing using the latest in dye sublimation techniques.

We can design a cover for you or work closely with you or your agency to get exactly the look you want to transform your furnishings.

We also offer a colour matching service if you have a specific colour scheme in mind, just pass us a sample of the colour you want and we'll do the rest.

We print reverse onto specialist dye sublimation paper which is then passed through our dye sublimation process onto a Heavy Polyester Satin. All our custom furnishings are removable, hard wearing and machine washable.

We stitch and hem in house and we also include discreet zip fastenings to make printed furnishings easy to maintain.

CURTAIN FABRICS AND CUSHIONS

Luxurious fabric curtains and cushions with your very own bespoke design or pattern for your event or interior space.

We manufacture custom curtain designs and cushion covers using Dye Sublimation printing. This process uses heat to transfer dye onto a wide range of fabrics and textiles resulting in stunning colours and pin sharp detail.

As most of our fabrics are polyester or polyester-mixed, our sublimation inkjet printing is an ideal technology for producing low volume, custom printed curtains and cushions that are long lasting and machine washable.

Call us today on 0800 389 9898 for an instant quote.



We offer instant quotations and samples on next day delivery. Call one of our helpful sales team to discuss your requirements today on 0800 389 9898.



Usually despatched within 5 days



Buy direct from us for lower prices



Order your FREE sample online or over the phone



Usually despatched within 5 days



Buy direct from us for lower prices



Order your FREE sample online or over the phone

CUSTOM PRINTED DOORMATS

Roll out the welcome mat with our custom printed doormats. Durable and easy to clean, customised doormats are a great way of welcoming visitors into your business.

We offer a wide range of doormats with various materials ranging from standard polyester to tufted mats and all bonded into a thin non slip nitrile rubber.

All doormats can be finished with a hard wearing rubber edge or can be left border-less for an edge to edge print. Thanks to their hard wearing design, they are easy to clean and made to last.

Call us today on 0800 389 9898 for instant quotes and a free sample.



Despatched within 48 hours of order



Buy direct from us for lower prices



Order your FREE sample online or over the phone



Call us today on 0800 389 9898 for instant quotes and advice from the specialists.



Despatched within 48 hours of order



Buy direct from us for lower prices



Order your FREE sample online or over the phone

CUT OUT FIGURES

We print and finish all our free-standing cut out figures using the very latest digital technology which means there is no premium for low volumes or one offs.

We supply a wide range of bespoke printed free-standing figures to suit all applications, usually in just 48 hours from receipt of your official order.

Choose from a wide range of lightweight or heavyweight materials including:

- Display card
- Kappa board or foamcore
- Rigid foam PVC or foamex
- MDF
- Corrugated board

Cut outs are supplied with easy to fit fins to the rear of the display for added stability or we provide bespoke fixings for both internal and external use.



DIGITAL SIGNAGE

Eye catching digital displays are perfect for retail and commercial spaces. Change your offering at the click of a mouse and grab attention with motion graphics and live feeds.


Our digital signage is available in a huge array of sizes from small hand-held devices through 32" screens and up to sporting arena sized displays. Should you require a specific size we also offer bespoke screens to suit your needs.

We can design, programme and build all of your digital signage and provide you with a content management system allowing you to change the content on the screen via a simple log in. In simple terms, this means you can change the information displayed on your screen from wherever and whenever you like via an internet connection.


Digital displays are ideal for:

- Office environments to display sales targets and key performance indicators.
- NHS and GP surgeries to communicate bespoke and up to date health information.
- Retail environments to display special offers and promotions.
- Catering environments for food and drink menus allowing daily changes and updated specials.


Speak to one of our friendly account managers to discuss your digital display requirements today on 0800 389 9898.



Digital creative design services available



Bespoke screen sizes upon request



Supported content management software



ENTRANCE DISPLAYS

Set the theme for your conference, event or exhibition and extend a warm welcome to your delegates with our vibrant Entrance Displays.

Let us help you to transform your event with our stunning entrance graphics using a variety of internal or external graphic solutions. All of our entrance displays can be fitted for temporary use with a minimum of fuss. Choose from options such as window graphics, free standing cut-outs, custom printed carpets, fabric and textile printing, temporary direction signs, PVC banners or exhibition booth packages to name just a few.

You can also take advantage of our professional UK wide installation service. Using our own in-house installation teams we are able to take all of the hassle out of install and de-rigging your entrance displays.

We've been a specialist in the UK exhibition industry for well over a decade, so we've worked hard to make sure you get value for money along with a great attention to detail and excellent service every time you order from us.



Call us today on 0800 389 9898 for free friendly advice from the specialists.



UK wide survey & site assessment



Method & risk and consents



Dedicated in-house installation team





ETCHED & FROSTED VINYL

If you are looking to add an extra dimension to your windows or glass entrance then look no further than our etched and frosted vinyl.

These unique self adhesive vinyl products give an impression of traditional sandblasting on clear substrates such as glass, acrylic and polycarbonate. Etched and frosted vinyls are available in a number of distinctive finishes, each of which provides individual creative effects when applied as decals.

Crystal Etch offers an attractive glitter effect. Silver Etch is particularly suitable for decals where a higher level of privacy is required whilst Dusted Etch provides a higher level of transparency.

We can supply your designs pre-cut on backing paper and with application tape applied for easy installation. Alternatively we offer a full UK wide installation service.



Despatched
within 48 hours
of order



Buy direct
from us for
lower prices



Order your FREE
sample online or
over the phone



EXHIBITION BANNERS

Stunning full colour PVC or fabric banners for your exhibition or event that are larger than life.

We can provide hanging banners or frame tensioned banners for your exhibition or show. All of our exhibition banners can be printed single or double sided and come supplied with reinforced eyelets and easy to use self locking nylon cable ties.

Choose the right finish for you!

Reinforced eyelets – eyelets allow banners to be hung or fitted directly to a wall or you can also use a bungee system or tie directly onto rails or banisters using electrical cable ties.

Pocket and dowel – ideal for banners which are being hung, pockets are stitched into the bottom and dowels are inserted to provide hanging weight to keep the banner tensioned. This simple system is completed by using cable ties or steel wire for larger banners.



Despatched
within 48 hours
of order



Buy direct
from us for
lower prices



Order your FREE
sample online or
over the phone



EXHIBITION GRAPHICS

Take advantage of our vast experience in delivering high quality, compelling exhibition graphics.

We've been supplying Printed Graphics for Exhibitions for over 19 years, so we've worked hard to make sure you get value for money along with great service every time you order.

4 reasons to choose The Image Group for Large Format Graphics

- We offer big savings on all stock materials.
- Instant quotations - We know everyone's needs are different. That's why we offer prices within 10 minutes of your enquiry.
- Rapid Delivery - We offer 48 hour turnaround on most Exhibition Graphics.
- Help with your artwork - We have a designated pre-press department to offer you peace of mind when it comes to supplying your own artwork. We also have a full in house creative team - so if you're a complete beginner in the design stakes, we can handle artwork requirements on your behalf.

You can find comprehensive details on a wide range of material options for Exhibition Printing by checking out our 'Choosing Materials' section.

Our promise to you is quality Exhibition Graphics with rapid delivery, keen prices and great service from friendly, helpful specialists in the trade.

Let us take care of everything from design through to printing and installation. Call for an instant quote on 0800 389 9898.



Despatched within 48 hours of order



Buy direct from us for lower prices



Pre-press & creative design service



Did you Know?

We've been designing and printing exhibition graphics for domestic and international clients for nearly two decades - from Anglesey to Australia and Cambridge to California?





EXHIBITION STAND - BESPOKE

Open Space Exhibition Stands designed and constructed in Manchester in our own workshop. Transported safely and installed UK wide using our own experienced teams of joiners and fitters.

If you're looking for a professional supplier for design, build, transportation and installation of your Open Space Exhibition Stand... Call us today for friendly help and advice.

We know that choosing a supplier you can trust can be one of the most important decisions in the exhibition planning process. The Image Group is big enough to successfully manage the most ambitious of Open Space and Custom Built Exhibition projects, providing serious commitment to your objectives.

We have a proven track record in the industry and can guarantee the personal attention you need for a successful exhibition project. We've been producing custom stands for companies in the UK for many years and we pride ourselves on our attention to detail and can do attitude.

Our information and advice is always friendly, objective, jargon-free and without obligation, so don't hesitate to call us for help with your next exhibition.

Call us today on 0800 389 9898 for instant quotes and advice from the specialists.



Usually installed
in 2 weeks



Buy direct
from us for
lower prices



3D visuals
available for this
product



EXHIBITION STANDS - MODULAR

The concept of Modular Exhibition Stands is one of good old common sense.

Modular Exhibition Systems that can be transported easily, assembled quickly and without fuss, resulting in a Modular Display Stand that looks fantastic at your show or event and best of all, can be used over and over again.

Our Modular Exhibition Stands use the popular Lynx Modular Exhibition System which is made from a carefully designed standard range of anodised extruded aluminium. Using Lynx, you can choose from a large selection of profiles to create sophisticated Modular Stands across a wide range of sizes to suit your plans and your budget.

We offer a full service provision with:

- Stand plans showing different elevations are produced for all Modular Exhibition Stands
- All plans are produced using Autocad to ensure accuracy and are suitable for submitting to the show organiser for approval
- A 3D colour render helps you visualise the look and feel of the stand
- We also produce a detailed plan showing exactly where graphic panels are situated
- An electrical plan details the location of power sockets, internet points and AV where required
- A full list of every component required for the stand finishes the package
- Our experienced team of dedicated installers provide install and breakdown services at your chosen venue.
- Once your Modular Exhibition Stand is complete, checked and cleaned, we'll hand it over for your event.

After your exhibition, you can rest assured that your Modular Display Stand will be crated and stored carefully in our warehouse ready for your next event.



Did you Know?

We can create a modular exhibition stand that can be used multiple times and configured to suit different sized spaces.



Call us today on 0800 389 9898 for instant quotes and advice from the specialists.



Usually installed in 2 weeks



Buy direct from us for lower prices



3D visuals available for this product



EXHIBITIONS - PERMANENT

The Image Group are a specialist supplier of Permanent Exhibition Displays and Long Term Exhibitions in the UK.

We have a proven track record of supplying and installing Permanent Exhibitions that stretches over many years.

We have worked in a wide range of locations providing Museum Displays as well as public consultation displays.

Our specialist team of 50 professionals offer full services for Permanent Exhibitions including:

- Original creative design working to a carefully detailed brief
- 3D rendering and movie fly through to illustrate your ideas and concepts prior to manufacture
- Cabinet making and shop fit standard joinery work
- In house spray finishing and paint facility
- State of the art wide format printing in super rich 1400dpi full colour detail
- Digital routing and finishing on our unique 6m x 2m cutting bed
- In house fabrication and steelwork
- Electrical services using our own qualified electricians
- Our own transport and logistics
- UK wide installation using our own time serviced fitters

The starting point of any Permanent Exhibition Display should be the finished result. The Image Group offers Permanent Exhibitions to rival the best in the business. We're extremely proud of our Long Term Exhibition service and protect our reputation for quality and excellence with the high standard of our work.

Call us today on 0800 389 9898 for instant quotes and advice from the specialists.



Usually installed
in 2 weeks



Buy direct
from us for
lower prices



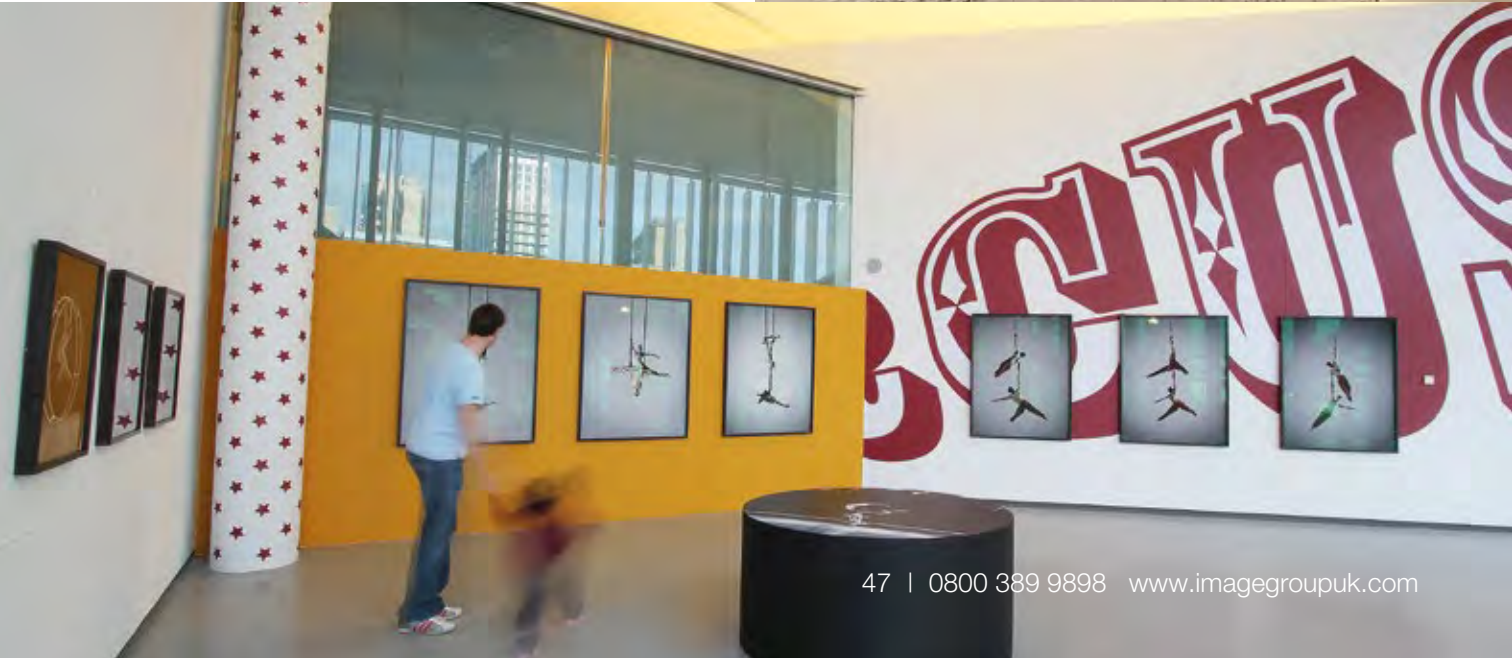
3D visuals
available for this
product



Did you Know?

We enjoy taking on the most unusual or demanding creative briefs...

Contact us today to find out "if it can be done".





EXTERNAL MONOLITH SIGNS

Full site surveys, groundworks, production, fabrication and installation all from one time served and reliable supplier.

We have an established reputation for supplying Monolith Signs to the trade and end users spanning nearly two decades.

We can supply external monoliths in a range of sizes and finishes including illuminated or non illuminated.

Choose from metal or mirrored finish, powder coated or fully graphic fronts and rears.

We take care of everything including groundworks, services, manufacture, delivery, cranes and powered access, electrical connections and installation.

We also provide risk assessments, method statements and risk analysis as standard.

EXTERNAL SITE BOARDS

From surveys to groundworks through to printing and installation, you can trust in our experience to deliver External Site Boards with the minimum of fuss.

We offer rapid print, manufacture and installation on large format External Site Boards and Commercial Sign Boards.

Choose from a range of specifications for Large Outdoor Site Boards including:

- Dibond or Alupanel
- Plywood
- Correx or fluted plastic
- MDF and veneered plywood

Our comprehensive External Site Board installation service is available across the UK using our own transport and installation teams. We can also liaise with site managers and health and safety personnel and handle all documentation to ensure there are no delays.

Call us today on 0800 389 9898 for expert advice and quotes.



Why choose Image?



External grade
fade resistant
UV stable prints



Print direct to
a huge range
of rigid boards



48 hour despatch
for print only
orders



UK wide
survey & site
assessment



Method &
risk and
consents



Dedicated
in-house
installation team

Call us today on 0800 389 9898 for instant quotes and advice from the specialists.



Usually installed
in 2-3 weeks



Method &
risk and
consents



Dedicated
in-house
installation team



Find out what sets Fabric Graphics apart by ordering a FREE sample from us today on 0800 389 9898.



Despatched within 72 hours of order



Buy direct from us for lower prices



Order your FREE sample online or over the phone



Did you Know?

Some of our printed fabric graphics are machine washable, giving you longer use.



FABRIC GRAPHICS

Fabric graphics have fast become an industry favourite with their stunning colours, rich detail and green credentials.

Using our specialist dye sublimation process you can now purchase Printed Fabric for Exhibitions in less than three days from placing your order.

Textile Graphics are ideal for exhibitions and displays, point of sale applications and retail environments. Fabric Graphics are luxurious, sophisticated and designed to stay looking fabulous.

You can choose from a wide range of substrates including matt, silk and gloss polyesters, flag mesh, silk, cotton and artists canvas.

Some of the benefits of Fabric Graphics are:

- Superb print quality with rich, vibrant colours
- Machine washable for multiple uses
- Ultra light weight for reduced transport costs
- Huge range of materials and applications
- Eco friendly materials with true green credentials

Find out why Printed Fabrics are becoming increasingly popular in the UK exhibition and display market by ordering your FREE material sample today.



FLAGS

Flags are ideal for outdoor exhibitions, outdoor promotions and outdoor events.

They offer outstanding performance in windy conditions which means you have no worries concerning health and safety - come rain, wind or shine.

We have a huge variety of flags available ranging in size from 2.6m up to 5.6m and in a range of shapes and finishes. They can also be used for outdoor and indoor applications thanks to our range of bases.

Flags are incredibly light, weighing under 2kg, and come alive by rotating in the wind. They make no flapping noise and are extremely easy to assemble. We also offer single or true double sided printing on our flags.

All of our flags come with a range of bases to suit any application including:

- Heavy duty square bases
- Heavy duty cross bases
- Push in spike bases
- Silver zoom bases
- Car tyre plate bases
- Weighted water ring bases

View the full flag range at www.imagegroupuk.com/flags



Get in touch with our sales team for more information on 0800 389 9898.



Despatched within 48 hours of order



Buy direct from us for lower prices



Pre-press & creative design service



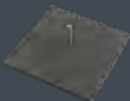
Choose from our range of bases



Large Cross Base



Weighting Ring



Square Base



Ground Spike



Small Cross Base



Drive-on Foot



Small Ground Spike



Outdoor Water Base



FLEXFACE SIGNS

Super large format seamless signage available with single or double sided illuminated and non-illuminated boxes.

Flexface signs consist of a lightweight aluminium box – usually powder coated and a flexible PVC ‘skin’ or face that is tensioned around the edges of the box to give a seamless finish. The PVC banner ‘skin’ is specifically printed for backlit applications to allow for the light to illuminate the banner graphic from edge to edge.

Flexface sign systems were developed for a number of reasons.

- The maximum sheet size in most rigid board materials is 3m x 2m. This means that any sign over this size requires a joint and a secure joint strip. When signs are placed at high level these joints can work loose over time as a result of high winds, causing the sign to become unsightly or in some cases unsafe.
- We are able to print PVC skins at a maximum width of 5m by any length which means our flexface signs do not need a joint on the face. This is particularly important if the sign is illuminated from the rear as it means the front of the sign is seamless.
- We can colour match the aluminium box as well as the PVC skin to any RAL or Pantone reference.
- Flexface sign and sign boxes are available in a number of different profiles and sizes including single and double sided options.
- As well as manufacturing rectangular shapes, we also supply flexface signs in various shapes and sizes including circular, triangular, hexagonal and irregular shapes.

Illuminated Flexface Signs

All our illuminated flexface signs are supplied with LED chain lighting fitted as standard. Offering a 5 year warranty LED’s are an industry leading product and are available in white plus a wide range of colours.



.....

Did you Know?

We’ve fabricated and installed a whopping 15m x 5m illuminated flexface sign... our biggest ever!

.....

Call us today on 0800 389 9898 for instant quotes and advice from the specialists.



Usually installed in 2-3 weeks



Method & risk and consents



Dedicated in-house installation team



FOLDAWAY KITS

Foldaway display kits are so simple to assemble and dismantle - fully completed in a matter of minutes by one person and supplied with it's own carry case or bag.

Foldaway Panel Kits can be supplied complete with a set of graphic panels or with plain fabric panels for you to pin or velcro your own paper directly to the face.

Perfect for presentations, demonstrations, charity events and small exhibitions - and available in a comprehensive selection of base colours and configurations.

We can supply your kit with a full set of graphic panels printed on a range of different materials including 5mm lightweight rigid kappa display board, 220 micron rollable PVC which is waterproof and non tear as well as regular budget photo paper which can be overlaminated in matt or gloss. We offer samples of all our stock materials delivered to you on a next day basis.

Here's the benefits in choosing The Image Group for your Foldaway Kits:

- Simply attach graphic panels with pre applied Velcro fastenings.
- All our foldaway kits are supplied with convenient carry bags and are usually available in just 48 hours.
- Kits comprise 900mm x 600mm main panels and 250mm x 600mm header panels.
- Graphics printed on a wide range of base materials including rigid, lightweight board or non tear rollable plastic.
- We can help with all aspects of your artwork and design including original royalty free images, re-sizing your photos, corporate branding, new logos or developing your brief into finished print ready artwork.

Call us today on 0800 389 9898 for friendly expert advice.



Choose your configuration



Specifications

We offer a wide range of materials for Fret Cut Lettering and Fret Cut Shapes. Call us today for material samples and prices supplied within 10 minutes of your enquiry.



FRET CUT SHAPES AND LETTERS

Fret Cut Lettering or Computer Cut Lettering as it's sometimes known is available in a huge range of materials, always in stock and available in a matter of days from receipt of your order.

Choose from:

- Clear Perspex or Polycarbonate
- White Acrylic or Coloured Acrylics
- Composite Dibond
- Traditional Aluminium
- Foamex or Foam PVC (3mm, 5mm and 10mm thick)
- MDF - regular or marine grade
- Self Adhesive Vinyl - printed in full colour or plain Pantone colours

All our Fret Cut Letters and shapes are manufactured in-house at our factory in Manchester.

With our state of the art 6m x 2m routing beds we're equipped to deal with the most demanding of specifications and turnaround times.

GAZEBOS

All of our gazebos are made to withstand the elements and provide shelter for your promotion or event, because as we all know, the great outdoors is not always guaranteed to be that great!

Our frames are constructed from 1.2mm gauge box section steel with a white powder coated finish that combines with a unique roof strut system for superior stability.

All of our canopy sides and roofs are hemmed and come with easy to use zip or Velcro fastenings. You can configure your gazebo with 1-3 standard walls as well as options for a zip or velcro sealed entrance.

Your design is printed onto a light, tough, eco friendly, waterproof material called eco-samba. Gazebos are supplied with tent pegs for fixing the feet on grass or specially shaped weights for exhibiting on hard ground or concrete.

Easily assembled by two people in under ten minutes.

We can give you an instant quote over the phone. Call us today on 0800 389 9898.



Usually
despatched in
5 days



Buy direct
from us for
lower prices



Pre-press &
creative design
service



Choose from roof only branding, add branded sides or combine more than one gazebo to create a larger space





GRAPHIC PANELS

The Image Group are an established supplier of high quality Graphic Panels and Graphic Displays.

We've been supplying Printed Graphics Panels for over fourteen years to clients across the UK, many of which are for temporary or semi permanent exhibitions.

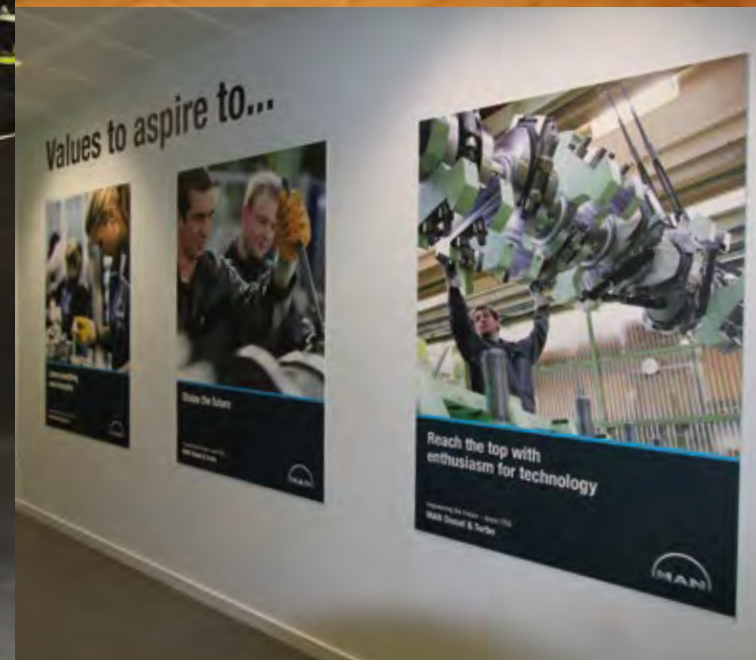
All our Printed Graphics Panels are manufactured in house at our 40,000 sq. ft facility in Manchester.

We use state of the art wide format printing machines and digital cutting to ensure the quality of our Graphic Displays is of the very highest standard. We offer direct to board printing and options for matt or gloss over-lamination. All of our graphics are printed at 1400dpi photographic quality.

If you have artwork you can upload it via our website, email or using Dropbox. Alternatively, we can help with your artwork and design requirements.

Choose from a wide range of materials which we hold in stock.

- 3mm and 5mm Foamex (heavier grade Foam PVC)
- 5mm Kappa Board (lightweight and rigid foamboard)
- 480 micron PVC (tear proof, waterproof and rollable)
- 5mm Bubble Board (combination of foamex and foamboard qualities)
- 3mm Dibond (composite aluminium, very rigid and hard wearing)
- 5mm Acrylic (clear, strong and suitable for sub surface printing)
- Canvas (Ideal for timber framed pictures)
- Polyester and textiles (perfect for large, lightweight drapes)
- PVC (Ideal for large scale banners)



Call us today on 0800 389 9898 for instant quotes and advice from the specialists.



Despatched within 48 hours of order



Buy direct from us for lower prices



Order your FREE sample online or over the phone



HANGING GRAPHICS

Our hanging graphics are a fantastic way of grabbing attention and announcing your stand, promotion or event from afar.

Made to the highest quality standards our hanging graphics can be available in just a few days from order.

Choose from a variety of Overhanging Graphics to create an eye catching, attention grabbing centre piece to sit above your exhibition stand including:

- 2, 3 or 4 sided timber frame Hanging Signs with foam PVC graphics covering exterior faces
- 2, 3 or 4 sided timber frame Hanging Graphics with fabric drapes covering outer faces
- Custom made fabric roundels with wire frames and hanging wires
- 3m x 4m double sided Overhanging Graphics with foam PVC covering two exterior faces
- 5m x 5m Double Sided Hanging PVC Banners supplied with pockets top and bottom

We also offer installation services using our own qualified staff or we can organise professional rigging on your behalf if you are exhibiting at one of the major UK show venues.

Get in touch with our sales team for more information on 0800 389 9898.



Despatched within 72 hours of order



Buy direct from us for lower prices



Pre-press & creative design service



HORIZONTAL POP UP DISPLAYS

Horizontal Banner Frames and Pop Out Displays are the perfect answer for all your indoor and outdoor branding requirements.

Horizontal Pop Up Displays look great on a conference stage, at pitch side or on a golf course.

Fabric Pop Out Display
Quick and simple to put up, these lightweight fabric displays are supplied with spring steel rods stitched into the edge allowing for setup within minutes.

Horizontal A-Frame Banner System
Thanks to its tool free push fit assembly, lightweight aluminium construction and large display, the Horizontal A-frame banner System is a favourite at exhibitions, events and promotions nationwide.

Banners are tensioned using adjustable looped elastic and can be fixed to both sides. When you're done, you can pack the frame and banners down into the included handy carry case within minutes.

Choose your size display

- Fabric Pop Out Display comes in three sizes complete with carry bag and ground pegs.**
- 1200mm (w) x 700mm (h)
 - 2000mm (w) x 100mm (h)
 - 260mm (w) x 1100mm (h)
- Horizontal A-Frame Banner Systems come in two graphic sizes with carry bag and ground pegs.**
- 2340mm (w) x 840mm (h)
 - 2840mm (w) x 1090mm (h)





Despatched within 3-5 days of order



Buy direct from us for lower prices



No tools required for assembly

Call us today on 0800 389 9898 for instant quotes and advice from the specialists.



Despatched within 3-5 days of order



Buy direct from us for lower prices



No tools required for assembly



INTERIOR SIGNS & OFFICE SIGNS

We design, manufacture and install UK wide a range of interior wayfinding signs and sign systems. Choose from a huge range of material and fixing options - all available in under 2 weeks.

Our sign systems are used in a wide variety of applications from big venues such as football stadia, directional office signs, to gymnasiums and other public buildings.

Custom made Interior Sign programmes designed, manufactured and installed across the UK – from start up businesses to refurbishments and brand refreshers. Call us today for help if you're considering options on Interior Sign Programmes.

We are a specialist supplier of Interior Sign Systems which means we take all the hassle out of your project.

We offer a full service including:

- UK Site surveys with a full proposal for approval prior to manufacture
- Working drawings and creative design from scratch or working with your own in-house design team
- Manufacture, print, fabrication and painting all in-house at our factory in Manchester
- Full UK installation service including method statements and risk assessments, plant and access equipment and disposal of old signs
- Maintenance contracts where required

What is a sign system?

A sign system is the means by which a sign is suspended or mounted. Sign systems can come in many different forms, from simple wall mounted frames to more elaborate suspended systems.

IN-STORE PROMOTIONAL STANDS

In-Store Promotion Stands are made specifically for retail promotions, food tastings and in-store product launches.

All promotional stands come complete with graphics and flat packed in a handy carry case. No tools or training are needed for assembly and low maintenance wipe clean surfaces make these units perfect for use in busy retail environments.

Choose from two different units to suit your needs:

Promotion Stands

These stable Retail Promotion Stands with reinforced counter tops come complete with a hygienic and easy wipe clean surface. With a built in shelf for storage and the option of a printed foamex header, these units are perfect for promotions and demonstration/information points.

Demo/Sample Counters

Easy wipe clean surfaces and a compact footprint make this unit suitable for store aisle demonstrations and product sampling promotions. Comes complete with internal shelf, carry bag and optional foamex header.



Call us today on 0800 389 9898 for instant quotes and advice from the specialists.



UK wide survey & site assessment



Method & risk and consents



Dedicated in-house installation team



INTERIOR WALL VINYL

The Image group print, cut, finish and install the highest quality self adhesive Interior Wall Vinyls and Custom Vinyl Wall Coverings.

We've been producing printed interior wall vinyl for a long time now and we've gained a huge amount of experience using different substrates over a range of different applications.

Using our state of the art digital flatbed printers we supply digital wall graphics in rich colour and at a stunning 1400dpi photo quality resolution. We can provide your graphics in a range of finishes including laminated, unlaminated and textured.

We offer a full nationwide installation service on all our Interior Wall Vinyls. This is a specialist service which is why we only use our own installation teams. No sub contracting means you have total peace of mind when you purchase from us.

If you need help with sourcing suitable royalty free images, then call us today. We have access to over 16 million royalty free images.

If you already have your own artwork, that's perfect. You can upload your artwork to us via our website and our pre-press department will run pre-print checks to ensure your Interior Wall Vinyls are produced to the very highest standards.

Get in touch with our specialists today to see how we can transform your walls on 0800 389 9898.



Despatched
within 48 hours
of order



Dedicated
in-house
installation team



Pre-press &
creative design
service





LAMPPOST BANNERS

Promote, advertise, sponsor and sell with Full Colour Double sided Lamppost Banners. We've put together a single kit with everything you need.

Each kit includes a 1 x full colour double sided banner with pockets, 2 x BannerFlex wind spill banner arms and 1 x Tamtorque fixing kit.

All our lamppost banners are printed and finished in-house using heavy-duty banner grade PVC with a 'block-out' centre for superior double-sided printing. Our printed PVC banners are flame retardant and have a UV life of up to 7 years.

Lamppost Banner Printing:

We offer full in house digital, screen print and fabric alternatives on lamppost banners which can be tailored to suit your specific requirements and budgets.

Lamppost Banner Arms:

We recommend one system which is BannerFlex for safety and durability. The BannerFlex system is a unique and patented design which holds the lamppost banner under constant tension - when the wind blows the force is immediately transferred to the fibreglass arms, which then flex to dissipate the energy.

BannerFlex offers an unrivalled 10 year product warranty. The 'wind-spill' factor is crucial in protecting the banner from excessive wear and greatly reduces the forces exerted onto the lamp column. BannerFlex is Wind tunnel tested up to 125mph. Universal brackets allow installation onto round, square, octagonal and fluted lamp standards.

Lamppost Banner Design:

Our in house graphic design team are happy to work with prepared artwork in any format or they can create bespoke designs as required at very competitive rates.

Fixings required for installation:

We strongly recommend our Tamtorque geared banding clips are used for banner installation. 1 kit comprises 4 bands and will install one or two banners. Please advise column diameter when ordering.



LARGE FORMAT POSTERS

Large Format Posters for commercial display, retail, exhibitions and events.

Rapid print and delivery of high quality, large format, photographic display prints.

Full colour prints supplied on a wide range of quality photo papers including matt, gloss and satin. Always in stock and usually available in just 48 hours from receipt of your order.

We print your images at 1400 dpi using solvent and UV warranted inks that are guaranteed not to fade. We offer superb colour accuracy, excellent colour graduation and a guaranteed colour matching service.

Our pre-press department are on hand to deal with any technical queries and to offer helpful advice on things like file formats, file sizes and colour checking.

All our large format posters are printed and finished in-house at our factory in Manchester. We even offer a die cutting service for no extra cost. This means you can have your large format posters cut and finished to any shape or size you want.

Get in touch with our sales team for more information on 0800 389 9898.



Despatched within 24 hours of order



Buy direct from us for lower prices



Pre-press & creative design service

Get in touch with our sales team for more information on 0800 389 9898.



Despatched within 72 hours of order



Buy direct from us for lower prices



Pre-press & creative design service





LECTERNS

Our robust and stylish workstations are ideal for applications where security and practicality are important.

Our lecterns offer ample storage for personal belongings, electronics and literature with internal shelving and a lockable door.

Made to be easily transportable, lecterns come flat packed, with easy to follow assembly instructions which requires no specialist tools.

- Dress the front of your Free-standing Lectern with our optional fascia kit. We can customise the clear acrylic panel with your own printed design or logo
- Choose from Keystone and Elliptical shaped tops
- Available in white, black, silver and birch finish
- Sides available in silver or white
- Optional acrylic graphic panel available includes stand off locators



Despatched
within 48 hours
of order



Buy direct
from us for
lower prices



No specialist
tools required
for assembly



Discuss your standard size or bespoke lightbox with our sales team today on 0800 389 9898.



Despatched
within 5 days
of order



Buy direct
from us for
lower prices



Pre-press &
creative design
service

LIGHTBOXES

An exciting product from The Image Group of Manchester - A fabulous free-standing lightbox supplied in a single bag. With rich full colour graphics, our lightboxes are held in stock and available for despatch within 48 hours from your official order.

Using the brilliantly simple Fabframe display system and fabric panels the first 4 sided lightbox in a bag is now available. This product has all round illumination with centrally located lighting and can be made to virtually any size required.

A typical lightbox (2000m x 750mm x 250mm) weighs just 16 Kilograms and can be assembled by yourself in minutes with no tools required. It is easily installed by one person and will fit in a bag just 1200mm long.

Available in silver anodised or powder coated to any BS or RAL colour.

Complete with 3mm or 5mm opal acrylic as standard, or alternative options including fabric graphics.

Why choose fabric graphics for a lightbox?

The demand for printed fabric graphics is set to grow hugely in the coming years. The main reasons for this is that printed fabrics are low cost, have excellent print quality with super rich colours that work brilliantly with backlit illumination, offer easy transportation because they are ultra light weight and of course are washable, which makes them very durable and great value for money.

We offer a rapid turnaround on fabric graphics and textile graphic solutions for lightboxes, exhibitions, displays, point of sale applications and retail environments.

Want a bespoke or super-sized lightbox?

We can also provide illuminated flexface signage up to 5m by any length with a seamless fabric skin. Thanks to their unique construction we can also provide custom shapes and colour match the frame to RAL colour of your choosing. See Flexface on Page ?? for more details.

Did you Know?

The lectern with lockable door option is an ideal solution for exhibitions where security is important.



LINOLEUM

Customised Linoleum printed with your own design or branding is ideal for short term exhibition applications.

Custom printed linoleum - durable, quiet, comfortable and now in full colour. Always in stock and usually available in just 3 - 4 days from receipt of your order.

Linoleum is a floor covering made from renewable materials such as solidified linseed oil, pine rosin, ground cork dust, wood flour and mineral fillers which means it has super green credentials.

We offer a custom printed version of this old favourite on up to 2m wide rolls manufactured and finished at our own facility in Manchester.

Tiling printed sections together for larger installations is a simple and quick process and is ideal for use in exhibitions, showrooms, retail and event branding. Printed linoleum provides a large slick and durable surface.



Despatched within 72 hours of order



Buy direct from us for lower prices



Order your FREE sample online or over the phone

LIGHT SOLUTIONS

The right lighting can really make your event, promotion or exhibition shine brighter than the rest.

We have a huge range of lighting solutions from off the shelf spotlights for pop up and roller banners displays through bespoke LED lighting for exhibitions, commercial properties or retail spaces.

Choose from some of our standard pop up and pull up display lighting:

The Powerspot 750 is a 50watt Low voltage spotlight suitable for banners, pop-ups and panel systems. Size - 400mm straight arm with adjustable head.

The Powerspot 800 is a 35watt Low Voltage spotlight designed specifically for use with banner stands. Supplied with 2.5m lead and adjustable head.

The Powerspot 1000 is a 200watt mains halogen floodlight for use with pop-up systems and display walls. 250mm straight arm with adjustable head. Lamp is protected by a glass barrier for safety.

The Powerspot 250 is a 50watt Low voltage spotlight suitable for banners and panel systems. Supplied with universal fittings.

Start your lighting plan early and speak to our friendly team about the best lighting solution for you. Call us on 0800 389 9898



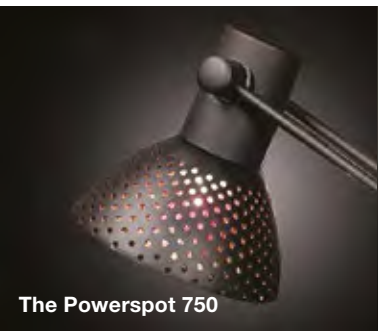
Despatched within 48 hours of order



Buy direct from us for lower prices



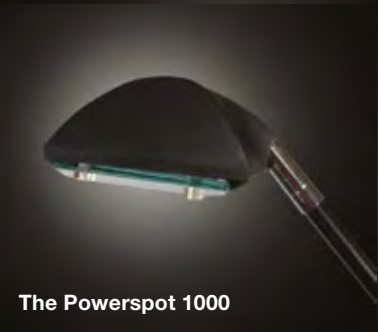
Dedicated in-house installation team



The Powerspot 750



The Powerspot 800



The Powerspot 1000



The Powerspot 2500



LITERATURE DISPENSERS

We stock a wide a range of portable literature display towers and dispensers to ensure carefully prepared material is shown in its best light.

Made to be portable and provided in a handy carry case, our literature stands are stylish and easy to assemble.

We have two models available but if you are looking for something more bespoke we also provide cardboard engineered or re-board solutions.

The Swing Up:

- Just unpack, pull up and The Swing Up is ready.
- A stylish and very portable literature display with 5 x A4 shelves
- Unfolds in seconds with secure double-locking set up
- Extra foot support for outstanding stability
- Vital statistics; 1470mm high, 9kg, available in matt black or grey
- Conveniently packed in a strong nylon carry bag or a wheeled trolley to lighten your load


Zed Up Lite

- The Zed Up Lite is our most popular portable Literature Display Tower
- Assembled in under 30 seconds
- Unit expands to full height and locks into place to provide a stable literature display
- Supplied with 6 double sided acrylic shelves
- Unit height is 1430mm
- Standard unit is 6 x A4 Portrait format
- Finished in elegant silver anodised aluminium
- Supplied in its own heavy duty internally padded flight case with silver latch fastenings

Grab your literature dispenser today by calling us on 0800 389 9898.


Despatched within 48 hours of order


Buy direct from us for lower prices


No specialist tools required for assembly

The Swing Up



Zed Up Lite



Get in touch on 0800 389 9898 today to see how we can create a truly unique magnetic display.


Despatched within 48 hours of order


Buy direct from us for lower prices


Pre-press & creative design service

MAGNETIC GRAPHICS

Full colour magnetic graphics are great for short term use or interchangeable displays where flexibility is needed.

Our standard Magnetic Vinyl is a white faced rubber magnetic sheeting ideal for temporary signage, it can be easily removed and applied again and again without any experience or specialist tools. Our standard 850 micron magnetic product is recommended for vehicle signage applications.

If you want to create a magnetic display on a non metallic wall we also have complimentary coatings and materials that can turn any surface into a suitable substrate for magnetic graphics.

We can create magnetic white boards for use in sport and teaching environments as well as creating graphics with dry wipe and magnetic finishes for office based uses.

From one-off prints to volume printing and distribution of corporate requirements we can help.

Why we're an ideal supplier for your Magnetic Vinyl printing

- Image checking service - simply email us your image and we'll advise the suitability for printing on Magnetic Vinyl and the maximum size it can be printed at
- Call us for instant prices on Magnetic Vinyl printing
- From one-off prints to volume production our continued investment in the best quality large format digital printing equipment delivers exceptional image quality and value for money
- We offer corporate art sourcing and creative services
- Fast UK delivery, typically 48 hours on most orders
- Request a sample of our Magnetic Vinyl Printing - we'll be glad to send it to you on a next day delivery
- Nationwide installation by our own in-house teams where required
- We offer fast, friendly advice without any obligation

MESH PVC BANNERS

Mesh PVC is an ideal choice for giant outdoor banners, building wraps and event branding.

We can install your Giant Mesh PVC Banner using a range of different options including - direct to facade, direct to scaffolding, temporary frame system or permanent frame system. Thanks to its perforated surface, Mesh PVC reduces the wind load on buildings or framework.

Super-sizing your artwork for giant banner production can pose a number of challenges; and we're on hand to assist. From creative services to our own in house pre-press team we can provide you with striking visual ideas or work with your own creative team to coordinate your banner printing.

Our ultra-strong and flame retardant mesh banners are printed using solvent UV inks for photo-realistic quality and long-lasting outdoor colour performance. Meticulous attention to banner finishing ensures that seams, back straps (dragon tails) and eyelets are reinforced to the highest standards.

By using our own experienced installation teams, our own transport and our own plant, we maintain the highest standards of safety, courtesy and customer care however simple or complex your project might be including:

- UK wide survey service complete with working drawings where appropriate
- Liaison with site or store managers and site personnel or your client
- Provision of all necessary risk assessments and method statements
- Supply, delivery and disposal of all necessary access equipment
- Assistance with planning permissions and consents
- Facilities management, accommodation and out of hours working

Contact us for more help with mesh PVC on 0800 389 9898.



Why choose Image?

 External grade fade resistant UV stable prints	 Reinforced seams and eyelets.	 Flame retardant mesh
 UK wide survey & site assessment	 Method & risk and consents	 Dedicated in-house installation team



MUSEUM & GALLERIES

Over the past 19 years we’ve assembled a specialist team of experienced staff with the technical skills to provide ‘museum and gallery’ standard solutions across the UK.

We design and manufacture all types of permanent and temporary signage and displays for museums and galleries in house at our 40,000 sq. ft facility in Manchester.

We also design, build and install high quality joinery items including display cases, reception points and information spaces.

Our range of services includes:

- UK wide survey
- Creative design from your ideas or working seamlessly with your chosen agency
- 3D design and movie fly through and animation
- Prototyping
- Artwork and pre-press through to print
- High quality joinery, fabrication and paint services
- Electrical installation and commissioning
- UK wide installation (including out of hours)
- Maintenance programmes

If you’re looking for a fresh pair of eyes to look at your next museum or art gallery installation, call our friendly team of account managers today for free no obligation advice and samples. We love a challenge and take huge pride in delivering the most demanding client briefs.

Call us today on 0800 389 9898 for expert help and advice from the specialists.



UK wide
survey & site
assessment



Method &
risk and
consents



Dedicated
in-house
installation team



Did you Know?

As well as providing interiors we can also provide bespoke sculptures and one off pieces of art to the most exacting standards for public display.



OFFICE GRAPHICS & INTERIORS

The Image Group are specialists in providing creative solutions for refreshing and revitalising your office or work space.

It's widely accepted that the spaces in which we work can affect our mood and in turn productivity. Office Graphics can be one of the simplest and most effective ways of creating a stimulating workplace environment for a reasonable cost.

With a huge investment in new print and fabrication technologies we can offer a wide choice of solutions including simple printed canvas frames, printed vinyl graphics, printed fabric, illuminated office graphics and much more.

Your project will be handled by a dedicated account manager, who, coupled with our design studio, high quality joinery services and our expert installation team give you the added benefit of an end to end service.

Our full service specifically tailored for refurbishments of office environments includes:

- On site surveys including scaled drawings and designs
- Original creative design and royalty free photography where required
- Working alongside your own design and creative team to implement your vision
- Pre-press and file checking service to guarantee accurate colour matches and pain free printing
- Full advice and sample service on material selections
- Wide and super wide format printing to a huge range of stock materials
- In-house fabric and textile printing including dye sublimation
- Digital finishing of all display items including routing, die cutting, stitching and hemming
- High quality joinery services including design and build
- UK wide installations including method statements, risk assessments and out of hours working
- Provision of all necessary plant and access equipment
- De-rig or strip outs where required

Call us today on 0800 389 9898 for expert help and advice from the specialists.



Did you Know?

As well as providing interiors we can also provide bespoke furniture such as reception desks to exacting specifications.

Did you Know?

We have a full team of professionals dedicated to delivering business interior schemes including designers, printers, joiners, electricians and experienced installers





Blizzard Outdoor Banner Stand



Storm Hydro Outdoor Banner Stand

Get in touch on 0800 389 9898 today to see how we can help you create a memorable event.



Despatched within 5 days of order



Buy direct from us for lower prices



Pre-press & creative design service

OUTDOOR BANNER STANDS

The sky's the limit with our range of outdoor banners! Perfect for outdoor events, festivals, conferences or outdoor exhibitions.

Our products are self assembly units with hollow bases you simply fill with sand or water for excellent stability and safety.

Our quick Outdoor Banner Stands check-list:

- Outdoor large-format banner stands are perfectly at home in areas such as sporting venues, conferences, airports and public areas
- Easy to transport and quick & easy to assemble with instructions provided
- Full colour printed graphic on heavy duty PVC is included in the price
- A really flexible outdoor display stand with excellent durability and longevity
- Our Horizon outdoor banner stand has an adjustable height of up to a maximum of 2.5m
- Several units can be linked together for greater visual impact!



Horizon Outdoor Banner Stand



Find out about our different outdoor banner stands today by calling us on 0800 389 9898.



Despatched within 48 hours of order



Buy direct from us for lower prices



No specialist tools required for assembly



OUTDOOR EVENT BRANDING

We provide a full Outdoor Event Branding service and have worked on some huge projects ranging from the Triathlon World Cup in Salford, the V Festival, The Grand National and many more.

To make the process easier we offer planning, consultation, brand development, printing, installation, de-rig and storage for all kinds of outdoor events.

A huge range of proven outdoor products to choose from:

We have delivered a wide variety of events down the years and in this time we have compiled a tried and tested list of products ranging from Outdoor Banner Stands, Printed Gazebos, Flying Banners, Mesh Banners and many other cost effective solutions. All of our products are tailored to work safely and effectively come rain or shine.

If you have something more specific in mind we can also provide joinery and fabrication services to suit your needs. Over the years we've built and installed weird and wonderful things such as custom built speed throw booths for Gatorade and mini golfs courses for De Vere Hotels to name just a few.

We're here to help and our friendly event specialists are always on hand so don't hesitate to get in touch for help with your enquiry.

PAN SIGNS

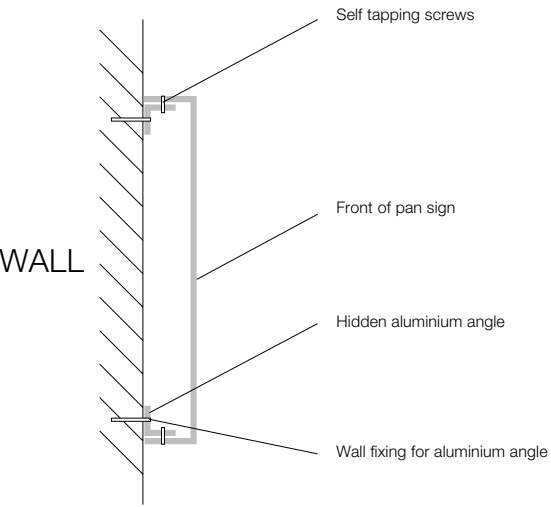
Aluminium pan signs or ‘tray signs’ are a traditional method of manufacturing high quality wall mounted signs with no visible fixings. Cost effective and easy to maintain, pan signs offer a flexible solution for your signage and branding needs.

Pan signs or tray signs are a three dimensional sign with ninety degree returns - commonly known as a ‘biscuit tin lid’. Manufactured from a range of materials including aluminium or composite aluminium - dibond.

Available in any size with return edges to suit your application. We offer part vinyl or full vinyl wraps on all our pan signs. We also offer pan signs in any colour or shape, including circular and contour profiles. We even offer illuminated or non illuminated pan signs.

Installation of pan signs is made easy using the method shown in the drawing below. This installation method also means that your pan sign does not have unsightly fixings meaning you get a super clean and sleek sign that will last.

Call us today for help and advice with your pan sign requirements on 0800 389 9898.



Contact us for quotes or more information on 0800 389 9898.



Why choose Image?

 External grade fade resistant UV stable prints	 Reinforced corner brackets	 Flame retardant materials
 UK wide survey & site assessment	 Safety first installation methods	 Dedicated in-house installation team



PANEL AND POLE SIGNS

The Image Group are a full service supplier of External Sign Systems and Panel and Pole Signs for new commercial developments and refurbishments.

We have an established reputation for supplying External Sign Systems to the trade and end users spanning nearly two decades.

Our Modular Exterior Sign System is a Pole & Panel solution. It's a generic description for the simplest of outdoor signs, a panel spanning two poles.

Our Pole and Plank Sign range consists of a round pole, a square post, a "D" shaped post, a quad slot pole (for double bank and 90 degree configurations) and a quadrant shaped walltrack.

With baseplates, ball finials and shaped tops to panels there is something in the External Sign System range for every application.

We also offer a Pole & Panel option to be used for fingerposts signs helping to keep your sign family consistent in appearance on larger projects.

Get in touch today to discuss your panel and pole signs with the specialists on 0800 389 9898



UK wide survey & site assessment



Method & risk and consents



Dedicated in-house installation team



PAVEMENT SIGNS

We have a huge range of pavement signs to suit every budget and possible use.

Pavement signs are a tried and tested product for enticing people in, letting them know you are open and showing off your latest promotion.

We can provide instant quotes with graphics included in the price and all of our pavement signs can be delivered to your door within 48 hours of your official order.

Whether it is a large sign for a petrol station forecourt or a simple open sign, all of our products are made to withstand the elements with weighted bases, swinging graphics or locking arms for extra stability. All of our signs come with UV stable prints meaning you can rely on your message to stay as bright and bold as the day it was made.

Some of our pavement products include:

- **'A' Sign Board Pavement Sign -**
Double-sided snap frame available in two sizes and suitable for A1 and A2 size posters
- **Defender Pavement Sign -**
Steel frame with concrete base for extra stability to carry double sided 30"x40" and 40"x60" posters
- **Eco Swinger -**
An extremely popular swing sign seen in hundreds of streets and shopping centres across the UK
- **Ecoflex Pavement Sign -**
A budget friendly rigid board with rounded corners for pedestrian safety and mounted in a recycled PVC base
- **Premier Chalk Board -**
'A' Frame chalk board with reversible panels which are suitable for soft chalk and liquid chalk pens
- **Sightmaster Pro -**
Stylish, black double-sided poster frame with heavy duty mounts with built in wind deflection and a wheeled base for ease of movement
- **Swinger 4000 -**
Super-sized A1 double-sided swinger sign with water fillable base and built in wheels. Also available with smaller poster sizes in the Swinger 2000 and 3000

To see more of our range visit www.imagegroupuk.com/a-frame

POP UP DISPLAYS

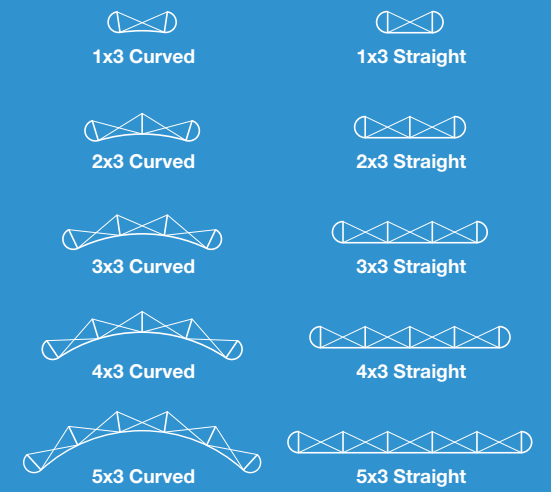
Impossible to ignore, never boring and simple and practical to use, it's no wonder Pop-Up Displays are an industry favourite.

What makes Pop-Up Displays so popular is their perfect mix of larger than life graphics with practical storage and portability.

The frame, graphics and optional spotlights come neatly packed in a compact wheeled transit case that will fit into most standard car boots. To assemble, simply set the frame on the ground and pull it upwards and the frame literally pops up and lock into place with it's magnetic connectors. Add the magnetic bars to the frame and then snap your graphics into place and you're ready to go in minutes!

The large display area allows for instant impact as well as providing ample space for information and calls to action. Graphic panels are produced in stunning pin sharp, colour rich detail using our latest state of the art printing facilities.

We can deliver a wide range of frame sizes and shapes within 48 hours of your order. Take a look at the different configurations below and choose one that suits you.



Call us on 0800 389 9898 for an instant quote over the phone.



3x3 Straight Pop-Up Display



Put up your Pop-Up Display in three easy steps



4x3 Straight Pop-Up Display



4x3 Curved Pop-Up Display



3x3 Curved Pop-Up Display

POP UP EVENT BARS

Introducing our new pop up event bar, ideal for festivals, fairs and other outdoor and indoor events.

Made from an interlocking metal frame, the pop up event bar comes in a handy carry case and can be setup and ready to use in minutes.

This is a versatile option for any indoor or outdoor occasion and the latest addition to our shelter range.

Our pop event bars can be used for serving drinks and food but they also find use as customer service areas, information kiosks and for promotional give-aways amongst other things.

Each bar has enough room for 3-4 people at any one time with ample space underneath the bar for storage.

The high quality water repellent domed top and sides can be printed with your own vibrant designs with either digital and screen printed options.

The simple design of the pop up event bar allows for a quick and hassle free setup enabling you to be up and running in a matter of minutes. In as little as 6 simple steps, you can have your event bar set up and ready to go.

To find out more and see a video of how simple they are to setup go to www.imagegroupuk.com/eventbars

- 

Despatched within 48 hours of order
- 

Buy direct from us for lower prices
- 

No specialist tools required for assembly



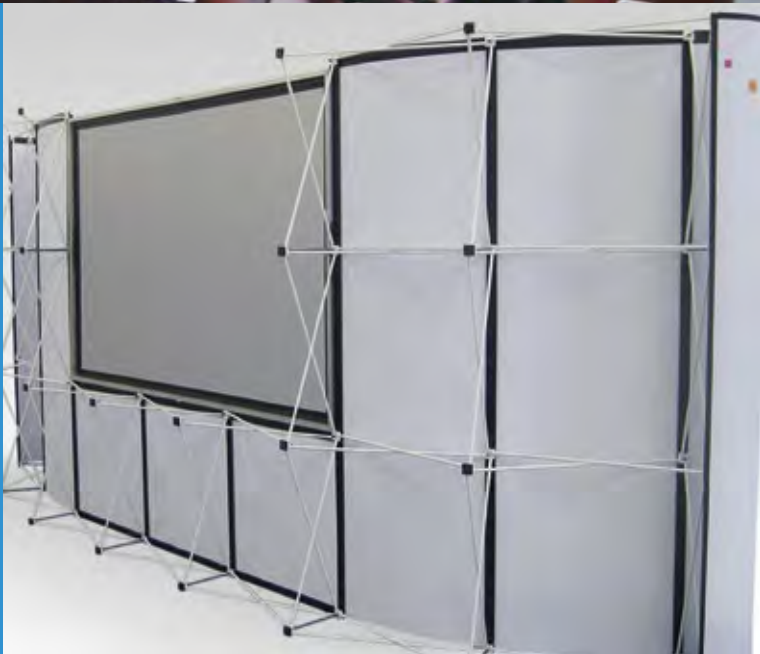
PORTABLE CONFERENCE KITS

Our Portable Conference Kit is the perfect solution for annual conferences, signature presentations and main event meetings.

A fantastic offer combining high quality hardware, printed graphics and excellent value for money. Supplied in two easy to handle transit cases and a separate transport case for the projection screen, handling and storage is extremely simple.

Easy to assemble in under 15 minutes by two people - supplied with easy to follow instructions. Transit case lid also doubles as a lightweight and rigid step to make hanging your graphic panels hassle free.

We can also supply an optional media projector that plugs straight into your laptop or AV system for hassle free presentations.



Get an instant quote from our friendly sales team today on 0800 389 9898

- 

Despatched within 48 hours of order
- 

Buy direct from us for lower prices
- 

No specialist tools required for assembly



PORTABLE EXHIBITION WALLS

If you're organising an event and need a specialist contractor for Exhibition Wall Rental or Portable Art Exhibition Walls call us today.

Take advantage of our industry specific knowledge and the right kind of Exhibition Wall Hire to suit your project and your budget.

The Image Group supply a range of Portable Exhibition Walls that are made specifically for temporary or semi permanent displays and exhibitions on a purchase or hire basis.

We have fourteen years experience of Exhibition Wall Hire including site surveys, careful preparation, in house transportation and on site installation using our own qualified fitters.

We can also provide bespoke lighting solutions using the latest LED lighting to help bring your exhibition or artwork to life.

PRODUCT DUMP BINS

Rapid turnaround on full colour dump bins and point of sale units manufactured in a range of materials at our own factory in Manchester.

If you're looking for cost effective solutions for point of sale display bins - look no further. We manufacture, print and cut a wide range of free-standing products in house.

Our specialists advisers can design and specify the right product for your requirements. What's more we supply any quantity from single runs to multiple purchases. We even manufacture our own boxes for despatching your dump bins safely.

If you're looking for dump bins in quantities of hundreds why not consider box board engineering. Box board is a lightweight material. It's durable and long lasting and can be despatched flat pack meaning carriage costs are kept to a minimum. With simple to understand assembly instructions included, installation is easy too. Box board also has top class green credentials. It's fully recyclable and is manufactured from a percentage of post consumer and machine broke waste. It is biodegradable and compostable. Box board units are designed specifically for medium term use (3 - 6 months in retail type environments).

If you need something that is designed for longer term use (6 - 12 months in retail type environments) you could consider supplementing box board with harder wearing foamex panels. Foamex or Foam PVC is an extremely smooth sheet material that has a brilliant white face. It's also fabrication friendly (easy to bend, cut, drill, glue). We are able to print high quality full colour images at 1400 dots per inch from your artwork to one or both sides of Foamex.

If you are in need of some help with your artwork or you wish to pass on a template for your agency to design to, our studio and pre-press department will be happy to help.



We can create your own bespoke solution so get in touch with our team today on 0800 389 9898

Talk to our friendly team today on 0800 398 9898 for expert advice on the right solution for you.



Pre-press & creative design service



Buy direct from us for lower prices



Dedicated in-house installation team



Pre-press & creative design service



Buy direct from us for lower prices



No specialist tools required for assembly

PVC BANNERS

The Image Group supply full Colour PVC Banners that are suitable for indoor & outdoor use. All our printed PVC Banners are printed in super rich, vibrant photo quality on 440gsm heavy duty PVC and supplied with reinforced eyelets as standard.

We've been supplying Full Colour PVC Banners for thousands of UK clients for many years. In that time we've worked hard to make sure our great service for Photo Quality PVC Banners always stands out. Delivery on most PVC Banners orders is just 24 - 48 hours.

To help make sure this happens, we're on hand to help organise your Printed PVC Banners and answer any queries you might have on things like file formats, photo quality and resolution and super sizing your artwork.

Everything we do is aimed at providing a hassle-free experience and this includes saving you time spent searching to find the right supplier.

For competitive prices and a personal service on all your Printed PVC Banner requirements, call us today . We'll answer the phone within a few rings and provide you with immediate assistance and prices for PVC Banners.

Fill out our online quick enquiry form on our website at www.imagegroupuk.com and get a quote emailed straight to you.



Despatched within 48 hours of order



Buy direct from us for lower prices



Order your FREE sample online or over the phone



.....

Did you Know?

We also provide a full creative design service to help you create the look you want for your PVC Banners

.....







RE-BOARD

Re-board is an exciting new material that is changing point of sale and exhibition displays.

Specially engineered from lightweight paper based materials, Re-board has only 20% the weight of MDF and 80% of its strength making it perfect for 2D and 3D applications. The smooth top surface provides a great substrate for our sharp and vibrant full colour print.

Made from a unique structure of corrugated board cells formed in several layers for extra strength, Re-board can be built into almost any shape or design from simple display boards up to full exhibition walls and even chairs and podiums.

The method of manufacture employed by Re-board allows for perfect cutting every time. We are even able to bend it, fold it and slot it together to make any structure or display you can imagine.

Re-board is incredibly environmentally friendly and provides a far greener alternative to other solid boards as it is made from 100% recycled fibres and can be fully recycled like regular paper.

All of our Re-board products come flat packed with easy to follow instructions on assembly to help get you up and running in no time.

We offer standard design templates for logo back boards, exhibition walls, podiums and much more. We also offer a bespoke design service to help you realise your ideas.



We offer samples free of charge - simply call us on 0800 389 9898 and speak with our friendly team.



Pre-press & creative design service



Buy direct from us for lower prices



No specialist tools required for assembly

Did you Know?

We offer reception desks on a hire basis for clients where budget may be an issue

RECEPTION DESKS

We have a range of beautifully crafted desks in stock as well as a design and joinery service to create a more bespoke solution.

Our desks can be used as permanent office fixtures or they can be used as stunning reception points at exhibitions or events.

If you would like a bespoke desk or you want to see some of the desks we hold in stock, get in touch on the number below or via our website.

Call us today on 0800 389 9898 for instant quotes and advice from the specialists.



Bespoke desk designs available upon request



Buy direct from us for lower prices



3D visuals available for this product



ROLLER BANNERS

Roller Banners are an effective front-facing advertising solution for any purpose.

They can be used in shops that want to advertise their products to customers, businesses that want to promote more of their services, marketers looking to make a serious impact during an open exhibition and more.

Roller Banners can be used time and again too, thanks to their compact, portable nature and ease of storage. One of the main benefits of investing in Roller Banners though, is their pop-up nature and their ability to quickly convey a targeted message and attract the attention of the passing public.

Roller Banners are available in different types and sizes, and are suitable advertising solutions for businesses in any background and sector. Key to maximising the potential success of Roller Banners is the message itself and how it's conveyed to the public.

Image Group will work with you to develop your message according to your budget to produce visually-stunning banners that can be used repeatedly to convey a highly-targeted and attractive advertising message to your audience.

The humble roller banner is an incredibly noticeable, eye-catching and striking point of interest that can be used in any and every situation.

Call us today on 0800 389 9898 for instant quotes and advice from the specialists.



Despatched within 48 hours of order



Buy direct from us for lower prices



Pre-press & creative design service



Budget roller banner



All Roller Banners come with a handy carry case



Variable width roller banners



Standard roller banners

.....

Did you Know?

During the last decade we have supplied UK customers with over 10,000 Roller Banners?

.....



Superwide roller banners



Premium roller banners

.....

Need another size?

Some of our roller banners are available in different widths from 600mm up to 3000mm.

.....



Link² seamless roller banner system



ROLLER BLINDS

Image Group Roller Blinds are made to measure and offer privacy, while still allowing some light into your room. They are perfect for domestic or commercial use.

Elegant yet robust fabric can be raised or lowered to control the light. When closed it allows light to gently penetrate in to your environment whilst maintaining your privacy during the day or night. A Blackout version is available. Made using strong quality components and aluminium tubes. (Beware of inferior blinds using plastic or even compressed cardboard tubes).

If you are looking to purchase blinds for your office, home, or workplace, then why not get them custom made with your own design, photo or logo printed on them? Make your environment a reflection of your individuality.

These custom made roller blinds can fit any shape or size window up to 1.5 metres wide. Roller blinds can be produced with the graphic facing inwards (ideal for room interiors), or with the graphic facing outwards, which is the perfect way to display your company information when the business is closed.



Get in touch for an instant quote from our friendly team on 0800 389 9898 or visit our site for more information.

-  Quotations e-mailed in 15 minutes
-  Buy direct from us for lower prices
-  Order your FREE sample online or over the phone





SHOP FRONTS & FASCIAS

The Image Group are a specialist supplier of Shop Fronts and Fascias.

If you're opening a new retail outlet or preparing to re-brand a chain, we can help with original Shop Front ideas right through manufacture, print and installation across the UK. All this from one supplier with a proven track record, without any unnecessary fuss or headaches.

We maintain our reputation for quality with the high standard of work we produce and we've been doing it for nearly two decades.

We offer rapid Shop Front Sign surveys, usually within a couple of days of your initial consultation. From there we provide full working drawings, a design proposal and accurate costs.

We manufacture all our own Shop Fronts and Fascias in-house at our 40,000 sq. ft factory in Manchester. No sub contracting means we control the quality of the Shop Front Signs that we produce.

Our manufacturing facilities are comprehensive with in-house wide format printing, digital cutting and routing, fabrication, spray painting and a large joinery workshop.

When your Shop Front Signs are complete, we'll install at site using our own transport and our own qualified and experienced fitting teams.

SHELL SCHEME GRAPHICS

Here at The Image Group, we've been supplying the UK with Shell Scheme Graphics for many years. So, we've worked hard to make sure our service and quality stand out every time.

We offer a comprehensive range of Shell Scheme Graphic Panels ranging from supply only of wide format, high quality Graphics for Shell Schemes right through to a one off cost for full service including design, print, manufacture, transport and installation at site.

Our Shell Scheme Displays are high quality 1400dpi full colour prints on rigid or rollable material . All our Shell Scheme Graphics are printed and finished in house, so we control quality and speed of delivery.

Delivery on most Shell Scheme Graphic Panel orders is just 24 - 48 hours. To help make sure this happens, we're on hand to help organise your artwork and answer any queries you might have. Everything we do is aimed at providing a hassle-free experience and this includes saving you time spent searching to find the right supplier of Shell Scheme Graphics.

Call us today on 0800 389 9898 for instant quotes and advice from the specialists.



Despatched within 48 hours of order



Buy direct from us for lower prices



Pre-press & creative design service



UK wide survey & site assessment



Method & risk and consents



Dedicated in-house installation team

Get in touch today to discuss your panel and pole signs with the specialists on 0800 389 9898





SHOWROOM DISPLAYS

If you’re considering new Showroom Displays or need to freshen up an existing retail space, call for help and advice from the experts.

The Image Group are a specialist Showroom Contractor with a wide range of Displays for Showrooms to help promote your product or service and reach your target audience.

With a specialist team of 50 professionals, we can assist with original design, 3D rendering and product development. We also manufacture most of our own products within our 40,000 sq. ft facility in Manchester. We even offer a nationwide fulfilment and installation service on Showroom Displays.

We’ve been supplying Displays for Showrooms for many years. During that time we’ve picked up a huge amount of experience and knowledge of high quality Showroom Displays.



UK wide
survey & site
assessment



Method &
risk and
consents



Dedicated
in-house
installation team

Call us today on 0800 389 9898
for quotes and advice from the
specialists.

Order your tablecloth or get a
FREE sample from us today on
0800 389 9898.



Despatched
within 72 hours
of order



Buy direct
from us for
lower prices



Order your FREE
sample online or
over the phone

TABLECLOTHS

Customised printed tablecloths
are the perfect accessory
for registration, exhibitions,
presentations or information
points.

A great way to dress the top table at your conference too.
No minimum order quantity - we print single tablecloths up
to hundreds.

We offer different options on custom printed tablecloths to
suit your application and budget.

Choose from top of the range high quality dye-sublimated
polyester exhibition tablecloths or from our budget range
of PVC wipe clean tablecloths.

Polyester tablecloths are hard wearing and can be
machine washed and ironed at low temperatures. Supplied
with stitched hems for a professional finish with super rich,
sublimated colour that lasts.

PVC wipe clean customised tablecloths are a lightweight
plastic alternative that has a lower price ticket. Durable
and easy to transport. Lightweight and waterproof. Easy to
clean and maintain



TEMPORARY ADVERTISING

We supply temporary advertising solutions across a wide range of sectors and an even wider range of applications.

If you're looking for a turn key solution for a temporary advertising campaign then talk to a company with over twenty years experience in the business.

We've worked on some of the biggest and craziest schemes over the years including transforming portable cabins into an exhibition space, branding a corner of Salford for the Triathlon World Cup, putting on a show for a visit from the New Zealand All Blacks and much more.

With a full range of products and services we can take on the most demanding of projects and usually find a solution.

Our in-house team includes:

- Original creative design
- Pre-press studio for your artwork
- Huge print and finishing facility situated in 40,000 sq. ft of manufacturing space
- State of the art print and cutting facilities
- In-house joinery and fabrication
- In-house paint and spray facility
- Nationwide installation using only our own teams.

We love to be challenged so feel free to get in touch for a consultation to find out how we can help you realise your vision and make the most of your event.



UK wide
survey & site
assessment



Method &
risk and
consents



Dedicated
in-house
installation team

Call us today on 0800 389 9898 to discuss your requirements with one of our team.



Did you know?

We transformed the graphics around the Etihad Stadium for an England fixture including carpets, the players tunnel and even the dressing rooms.



Get in touch for some expert advice on how we can help you create the perfect totem display on 0800 389 9898.



Pre-press & creative design service



Buy direct from us for lower prices



No specialist tools required for assembly



TOTEM COLUMNS

Budget Totem Column Displays are an ideal solution for short to medium term information points, public way finding and point of sale applications.

Free-standing Displays are lightweight, flat packed and supplied with an easy to fit plastic edging. These free-standing column displays can be erected by two people without any fuss. Full assembly instructions are provided and no training is required.

Available in four standard and bespoke sizes - we usually despatch Budget Totem Column Displays in just 48 hours from receipt of your order.

Our Free-standing Displays are printed in full colour direct to 5mm thick rigid display board and provides a high quality and cost-effective solution without the need for print lamination. These Totem Stands can be printed double-sided for a low-cost multi-message campaign.

We can also provide rotating columns on motorised bases to help attract more attention.



TRAILER WRAPS

We design, print and install fabulous full colour trailer wraps for festivals, exhibitions, county shows, horse events and much more.

We have a wealth of experience in this sector and we only use warranted materials on all of our jobs. Coupled with our dedicated vinyl fitters we guarantee you will be happy with the finished result.

To ensure your trailer will stay looking good for years to come we use a 3M IJ180Cv3 Series vinyl which is a premium cast 50 micron film with a permanent, grey pigmented adhesive for excellent hiding power. It is perfect for applying to flat or moderately curved surfaces and when coupled with our warranted laminate and light fast inks it is perfect for the job.

Our friendly team of account managers are on hand to help you get the finished trailer you're looking for and we can install on our premises with 24 hour security or at your location if you prefer.

We have an excellent creative team on hand to help with your ideas and to bring them to life. We can create your graphics for you from your brief and we also have a free artwork checking service should you have your designs to hand and ready for print.

We also offer an additional trailer refurb service that includes stripping the internals back and installing new units, electrics, water and gas to make your trailer as good as new. If you would like to see what can be achieved please visit our site and search for 'coffee' to see our case study on a complete top to bottom refurb of a used trailer for Peter Andre.

Get in touch with our friendly team today to discuss your trailer wrap on 0800 389 9898.



Pre-press & creative design service



Buy direct from us for lower prices



Dedicated in-house installation team



Did you know?

As well as wrapping the trailers we can also refit the inside to make it as good as new and exactly to your specification

TWIST GRAPHIC WALL SYSTEM

The Twist Banner Stand System is ideal for creating seamless graphic walls quickly and easily.

Perfect for use in exhibition halls, conferences and retail applications where rapid set up and hassle free take down is essential... and you get to use the system time after time.

The Twist Graphic Wall System links stands together with clever magnetic edge joints to create an almost infinite range of backdrops or shapes.

Perfect for exhibitions, conferences and retail applications, you can use Twist Banner Stands and Flexi Link graphics to create seamless exhibition walls over multiple panels with perfectly aligned graphics guaranteed. Panels join at the rear with a simple to use jointing panel.

Easy to transport and even easier to assemble. Each twist unit comes in its own compact case and thanks to its simple assembly you can be up and running in minutes.

We offer a free artwork checking service should you have a design ready to go and we also offer creative design should you need help in putting together your graphics.

Call us on 0800 389 9898 to find out what you can achieve with this versatile system.



Pre-press & creative design service



Buy direct from us for lower prices



No specialist tools required for assembly



VEHICLE GRAPHICS

We offer the complete service for single vehicle and fleet requirements, including consultation, design & proofing, print, production and application by our own fully trained and experienced specialists at our 40,000sq.ft facility in Manchester.

Full Colour Vehicle Graphics for cars, vans and coaches designed, printed and installed by one supplier in just a week from receipt of your order.

Vehicle Graphics provide a highly cost-effective form of advertising and brand awareness that works for your business 24 hours a day - 7 days a week.

Reach thousands of people with seriously well-dressed vehicles that deliver highly visible and mobile advertising for the lifetime of your vehicle. Have your company, organisation, products and services emblazoned on your vehicles. Get your message noticed in the street or a traffic jam!

All our vehicle graphics are printed in house using warranted 10 year self adhesive vinyls and overlaminates that ensure your graphics perform to the highest standards for years to come.

Get in touch on 0800 389 9898 to discuss how we can help you transform your vehicles.



Pre-press & creative design service



Buy direct from us for lower prices



Dedicated in-house installation team



.....

Did you Know?

We can even provide self adhesive vinyl letters that will form perfectly on to a plain, unpainted brick or breeze block.

.....



VINYL LETTERS & SHAPES

We offer a full range of Vinyl Letters and Shapes from solid colours or printed at high quality 1400dpi and custom cut at our factory in Manchester. All suitable for use indoors or outdoors and usually available in just 48 hours.

If you need to decorate a retail space, an exhibition space or a commercial environment with Computer Cut Vinyl Letters or Computer Cut Vinyl Shapes call us today. We can print and Fret Cut Vinyl Letters or vinyl shapes from your files or designs.

With some simple installation instructions you can even apply your own graphics. Alternatively, we can install on your behalf using our own UK wide installation teams.

Five easy steps to applying Vinyl Letters and Shapes:

- We supply vinyls or shapes cut to size
- We make sure to weed and remove all excess vinyl
- We tape up all vinyls or shapes - this means low tack release paper is applied for easy application
- All you need to do is offer up the vinyls to the area you're covering and peel back a small strip and squeegee it down to secure your design
- Now carefully peel off the release paper and squeegee as you go to reveal your freshly applied letters or vinyl shapes taking care to remove bubbles as you go

If for any reason that sounds too much, you can take advantage of our UK wide installation service.

Call us today on 0800 389 9898 for instant quotes and advice from the specialists.

		
Despatched within 48 hours of order	Buy direct from us for lower prices	Order your FREE sample online or over the phone





WALLPAPER

Luxurious textured wallpaper with your very own design printed in glorious colour and detail.

Create an affordable interior design scheme that's completely unique with full colour custom printed wallpaper.

Thank to our new Super Walltex wall covering we can print at up to 3m wide and up to lengths of around 45m meaning we can offer seamless graphics to cover standard wall heights in one joint free piece. Walltex comes with a white matt textured face and opaque silver back for fantastic colour reproduction and a luxurious finish. Walltex is applied using a ready mixed high strength adhesive just like a standard wallpaper.

Unique patterns, schemes, images, branding or landscapes. There's no limits to what you can achieve with custom printed wallpaper, wall coverings and custom borders. We offer a supply only service or full installation across the UK where required. We'll even survey your site and provide recommendations where necessary.

Here's our customised printed wallpaper checklist:

- Easy to use... simply paste to the wall like traditional wallpaper products.
- Our wallpaper has a light texture and has UK and Euro fire rating certifications.
- Free samples on request and no minimum order value.
- Trade, business-to-business and general public enquiries are all welcome.

Call us today on 0800 389 9898 for instant quotes and advice from the specialists.



Despatched within 48 hours of order



Buy direct from us for lower prices



Order your FREE sample online or over the phone



Get your project under way by giving us a call us today on 0800 389 9898



Despatched within 48 hours of order



Buy direct from us for lower prices



Dedicated in-house installation team

WINDOW GRAPHICS

If you're looking for an experienced supplier to provide high quality printed window graphics call us today!

Window Graphics or Window Decals? The term window graphics generally means covering large areas of glass with single piece full colour printed vinyl graphics. Window decals, on the other hand refers to partial covering of a window with smaller, shaped graphics or individual cut-out lettering, perhaps conveying a telephone number or web address.

Our printing presses are equipped with laser controlled cutting equipment, allowing us to combine window coverage with highly individual decal work. We use monomeric vinyls which are made for flat surfaces, short, medium or long term applications. Available in either gloss white, matt white or clear gloss with a choice of permanent or removable adhesives dependant on application. Outdoor durability from 2 to 4 years.

If you need us to install your window graphics, where appropriate, we provide site surveys to ensure the highest standards of safety and compliance. And we only use our own fully qualified, experienced installation teams.



MATERIAL GUIDE

Using the right material for your project or application is key and with the huge array of materials on offer here at The Image Group there is sure to be one that is tailored to suit your needs.

With our continued investment in state of the art digital print and finishing equipment we are well placed to deliver new and unique graphic and display solutions in a range of materials and finishes.

Thanks to our cutting edge flatbed printers with full colour and white ink capabilities we can print to a huge array of materials including MDF, dibond and even steel paper for magnetic applications. With our digital cutters and routing we can add a custom cut or finish to your graphics and branding.

We are constantly on the lookout for new and exciting uses for standard materials and we actively seek out cutting edge materials to bring to our customers. If you have something that you wish to print to or just you need an idea on what can be achieved please don't hesitate to get in touch with our friendly team to discuss.

Call us today on 0800 389 9898 to speak to our team and order a your FREE material sample.

Rigid Sheet Materials

We have a huge range of sheet materials for internal and external use. For short to medium term applications we stock foamex, foamcore and display board and for long term use we stock acrylic, dibond, MDF and much more.



Roll to Roll Materials

Our roll to roll materials are designed for a range of applications from specialist vehicle vinyls to textured wall coverings and super large mesh PVC building wraps. Take a look at our material section online to see what we can do.



Overlaminates

Overlaminates give an extra level of finish to print with gloss, matt and textured films available. They are also used to provide extra protection from UV, dirt and we even have an anti-graffitti film for longer lasting prints.



Fabric & Textiles

Our fabric and textiles range opens up a huge amount of new possibilities for point of sale, displays, exhibition and signage applications. Take a look at our range online to find a fabric and textile made to fit your needs.



Visit our materials page at www.imagegroupuk.com/materials for a comprehensive guide to our materials.

SUPPLYING ARTWORK, PRIVACY, TERMS & CONDITIONS

The quality of the final printed product begins with the quality of the artwork. To make your order as hassle free as possible, here are a few tips on how best to supply your artwork.

Artwork Format

There is a huge amount of software out there that can be used to design your artwork, some better than others. Each of the software packages exports files in an even bigger array of formats so it is easy to get lost when saving your design for print.

We can accept the following formats:
ai, eps, pdf, indd, psd, psb, jpeg, tif, png.

If you have anything that doesn't appear on our list, please feel free to contact us to check.

We use the Adobe Creative Suite of software which includes Illustrator, Photoshop and InDesign. If you send anything over to us in these formats please make sure to include or embed the links and fonts where necessary to avoid any delays in production.

We can also accept Microsoft Word and Powerpoint but as these aren't strictly publishing apps we may need to get in touch when checking your artwork.

Colours

We make every effort to print your artwork as close to the intended colours as possible. Unfortunately there are some colours that aren't achievable out of a CMYK process. In a program like Photoshop you can preview your files in CMYK to get an idea of how your colours may differ when printed out.

Where possible colour proofs or references should be supplied although we can provide printed samples for a small fee prior to the final print if you need us to.

Proofs

If necessary we can send back proofs for you to check over and sign off before final production. If you request this service, it is important to check you are happy with all information including sizes and specification before signing off.

Scale and resolution

When prints are output in large format, the resolution of an image becomes more crucial to the final quality of the print. Getting this right can be confusing and there are a few things that need to be followed to make sure your images come out looking their best.

1. First off you need to know what scale you are working to. If for example you are looking to print a banner at 10m wide then you will find that programs like Illustrator and InDesign have a maximum document size of 5m. This means that your banner needs to be set at smaller scale, in this case quarter size or 2.5m wide. Where possible try and stick to full size, half size, quarter size or a tenth size.
2. Once you know your scale we can work out what resolution your images need to be at. The resolution refers to how many dots or pixels per inch there are in your image (known as DPI for printers or PPI for files). If your PPI is set too low then your image will look pixellated or blurry but if you have it too high then your file sizes will be very big and slow to transfer.

In order to get the right setting please follow the guide as follows:

- Full size 100% = 72ppi - 100ppi
- Half size 50% = 150ppi - 165ppi
- Quarter size 25% = 300ppi - 315ppi
- Tenth size 10% = 720ppi - 735ppi

As ever if you are unsure or have any special circumstances, please don't hesitate to get in touch and we will be happy to help.

Transferring your artwork

We have developed a new portal on our website for our customers to upload their artwork. It's easy to use and you only need to have the email address you registered with us and an enquiry or job reference which is raised with us when you request a quote.

Just enter www.imagegroupuk.com/upload into your web browser and follow the instructions. Your files will be uploaded to your job folder on our server and the account manager you've been dealing with will be notified.

Any files that are under 10Mb can be sent over via email and we can also accept larger files via file transfer/cloud services such as MailBigFile, WeTransfer or Dropbox to name just a few.

Privacy Statement

The Image Group respects and safeguards our customers' privacy and we are open about the information we gather and how we use it. The information we collect when you enquire or place orders with us is used for managing your account, checking credit worthiness, marketing our goods and services and for market research and analysis.

When you apply for a business account we will provide your details to a credit reference agency that will keep a record of this search.

As an enquirer or customer of The Image Group we will use the information you provide us with to market our products and services and this may be done by Mail, Telephone, Fax and e-mail.

We appreciate your help in keeping your account and contact details up to date and will act promptly to make corrections and adjust your communication preferences. To notify us of any correction in contact details or to be removed from any/all marketing activity, contact your account manager or email us at data-protection@imagegroupuk.com.

We do not share our mailing list with any third parties, nor do we share any of your personal data with any other third parties without your explicit consent. If you have any questions, comments or if you require details of the data we hold about you please contact us at data-protection@imagegroupuk.com

Terms & Conditions

All orders for goods in this catalogue are subject to our full terms and conditions which can be found at www.shop.imagegroupuk.com/print/terms-conditions they shall apply to all contracts for the sale of goods (whether written or oral) by us to you to the exclusion of all other terms and conditions including any terms and conditions which you may purport to apply under any purchase order confirmation of order or similar document. No other terms apply unless agreed in writing by us.

All prices exclude carriage, packaging and VAT, which are charged at the prevailing rate on the date of invoicing.

Payment is required with order or by a 30-day credit account, subject to credit status. Interest on overdue accounts will be charged at 4% above Barclays Bank PLC's base rate in accordance with the Late Payment of Debts Act.

We reserve the right to alter specifications, designs and prices of any of our products / services without prior notice.

Quoted prices are subject to the sight of artwork and we reserve the right to charge for studio time where retouching, scanning or artwork amendments are required. No work will commence until the buyer's approval of artwork has been received. The buyer will meet any costs (in full) arising from changes requested once production has commenced.

Risk in the goods will pass to you on delivery to the address specified in your order.

Ownership of the goods shall not pass to you until we have received cash or cleared funds in full for the price of the goods and all other goods agreed to be sold, for which payment is then due. You must notify us within 7 days of delivery of the goods if they are incorrect or incomplete and you must notify us within 7 days of receipt of our invoice if the goods have not been delivered.

Written permission must be obtained before any part of this catalogue may be reproduced in any form.

These conditions of sale are subject to the law of England and Wales.